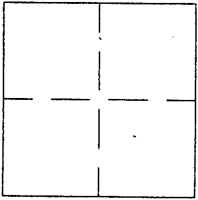


CORNER RECORD

APN No. _____ (Optional) Document Number CR 1152
 City of _____ County of ALAMEDA, California
 Brief Legal Description STANDARD COUNTY MONUMENT ON RALSTON COURT.

**CORNER TYPE**

Government Corner ☐ Control ☐
 Meander ☐ Property ☐
 Rancho ☐ Other ☒
 Date of Survey JULY 30, 1998

COORDINATES
(Optional)

N. _____
 E. _____
 Zone _____ Datum _____
 Elev. _____

Corner - Left as found ☒ Found and tagged ☐ Established ☐ Reestablished ☐ Rebuilt ☐

In compliance with Section 8771 of the Professional Land Surveyors' Act, this corner record is being filed to
 ESTABLISH X / REESTABLISH _____ the position of an existing monument PRIOR X / SUBSEQUENT _____
 to street or highway reconstruction. (Use this portion only when applicable.)

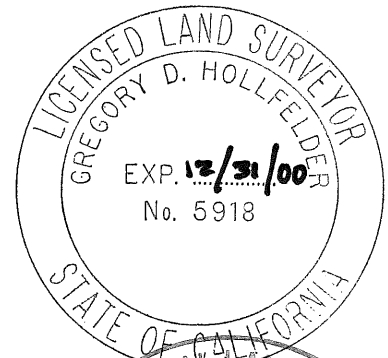
Identification and type of corner found: Evidence used to identify or procedure used to establish or reestablish the corner:
THE MONUMENT DESCRIBED BELOW WAS REFERENCED BY STRAIGHT LINES THROUGH
MONUMENT PIN AND DISTANCES SHOWN ON DIAGRAM.

A description of the physical condition of the monument as found and as set or reset: FOUND ALAMEDA COUNTY
MONUMENT SHOWN ON TRACT MAP 2060, EDEN TOWNSHIP, BOOK 42 PAGE 3.
MONUMENT FOUND IN GOOD CONDITION 0.23 BELOW SURFACE.

SURVEYOR'S STATEMENT

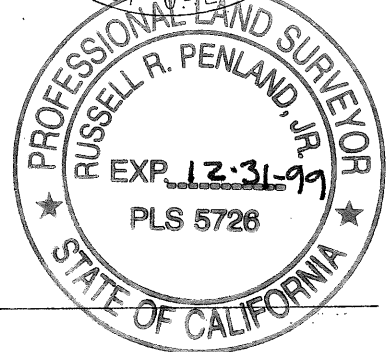
This Corner Record was prepared by me or under my direction in conformance with
 the Land Surveyors' Act on DECEMBER 21 19 98.

Signed Gregory Donald Hollfelder S. or R.C.E. Number 5918

**COUNTY SURVEYOR'S STATEMENT**

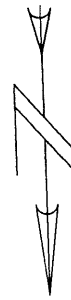
This Corner Record was received 12-21 19 98 and examined
 and filed 3-12-1999

Signed Russell R. Penland, Jr. Title Deputy County Surveyor



County Surveyor's Comment _____

RALSTON COURT



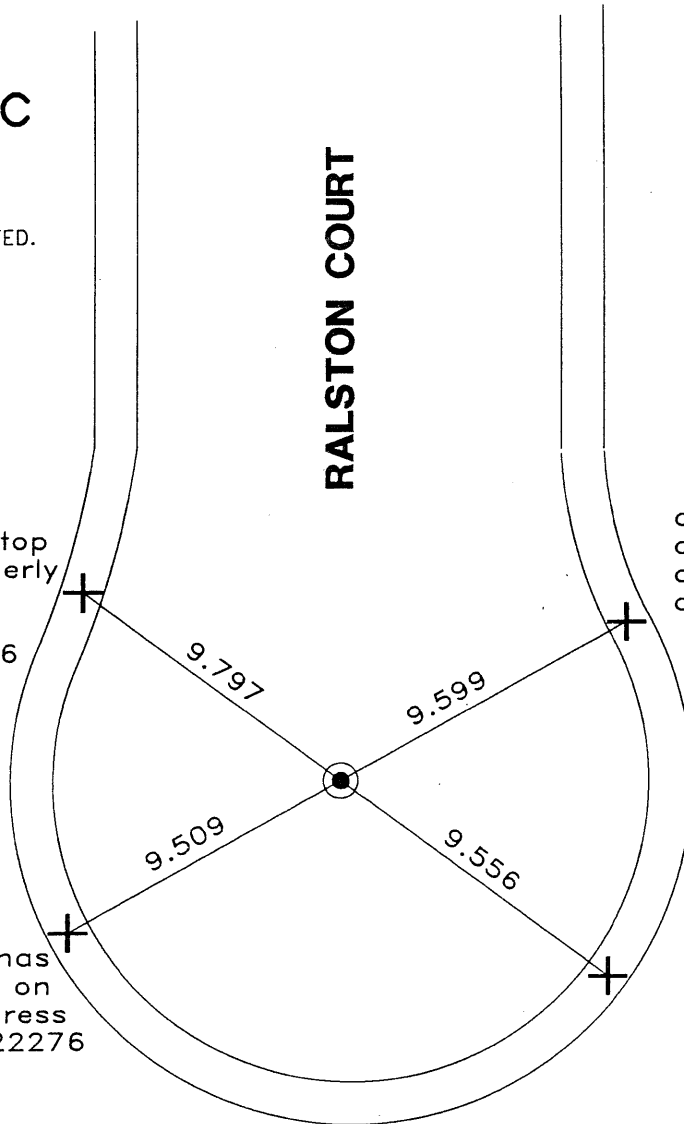
NO SCALE

at center line top
 curb 0.8 southerly
 from edge of
 driveway at
 address #22276

at center line top
 curb 1.1 northerly
 of edge driveway
 at address #22297

at center line
 top curb where
 the face curb has
 a "s" stamped on
 it, between address
 #22252 and #22276

at center line top
 curb in front of
 center line county
 flood control access
 gate



LEGEND

⊙ FOUND STANDARD ALAMEDA COUNTY MONUMENT, PIN IN CONCRETE
 POST 0.23 DOWN IN MONUMENT WELL.

+ SET CHISELED "+" IN CONCRETE.

REFERENCE(S)

PER TRACT MAP 2060, BOOK 42 PAGE 3, EDEN TOWNSHIP
 ALAMEDA COUNTY, CALIFORNIA.

FIELD BOOK LL-4171