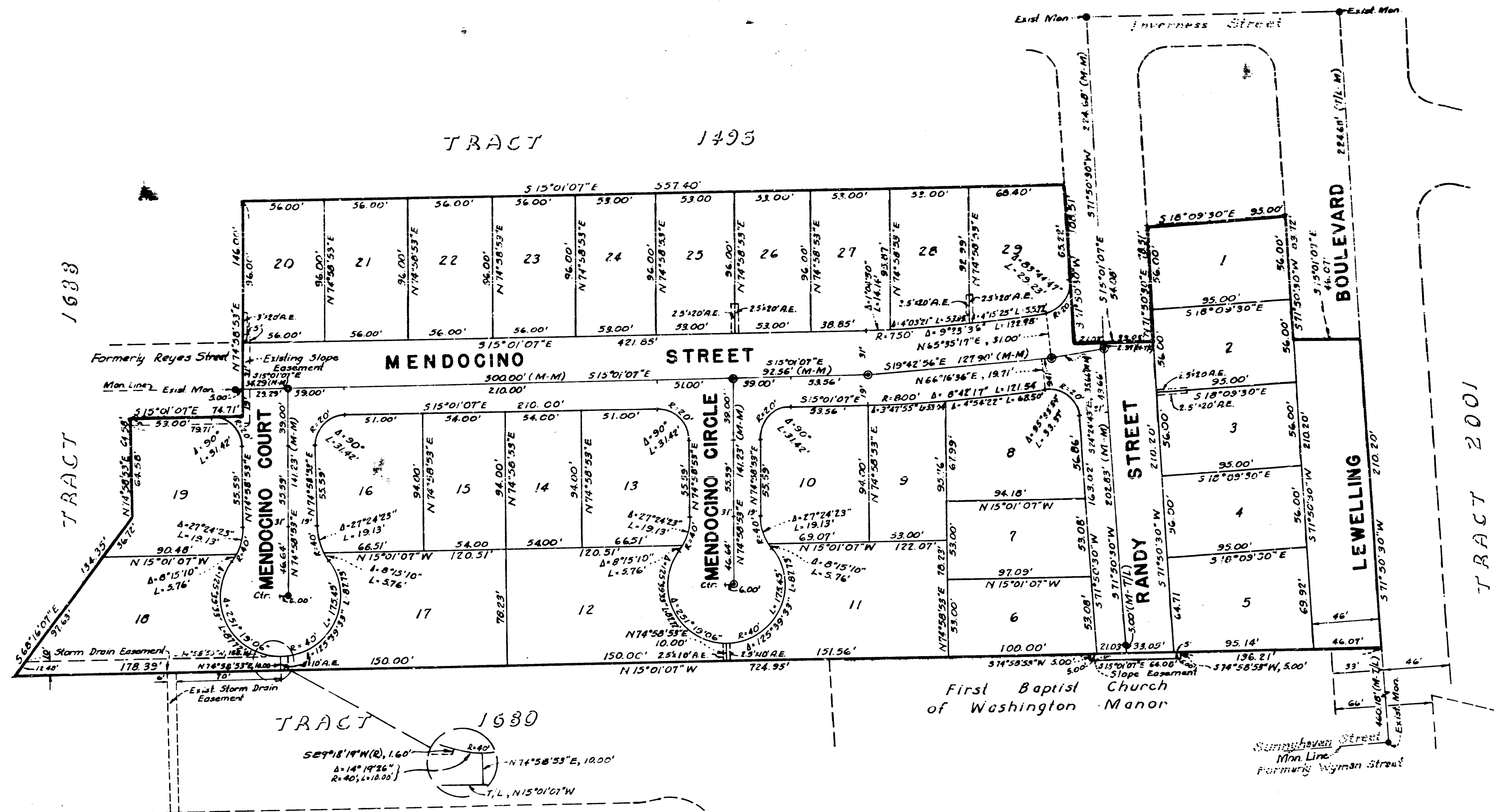


R
14
2

41-66

★ USE WITH CAUTION ★
THIS IS A PUBLIC WORKS DEPARTMENT
COPY OF AN OFFICIAL MAP
ON FILE IN THE OFFICE OF THE COUNTY
RECORDS, COUNTY OF ALAMEDA. OF
ANY INFORMATION OR CALCULATIONS
MAY HAVE BEEN ADDED HEREON.

RECEIVED
SURVEYOR
ROAD COMMISSIONER
JAN 29 PM 11:29



Note:
Concrete Monuments to be set shown thus: •
Existing Monuments shown thus: •
Basis of Bearings: Tract 1495
Building Setback Lines shall conform to City
of San Leandro Zoning Ordinance, Title 7, Ch. 3, Par. 110.1

PROPERTY OF
ALAMEDA COUNTY
SURVEYOR'S OFFICE

TRACT 2103

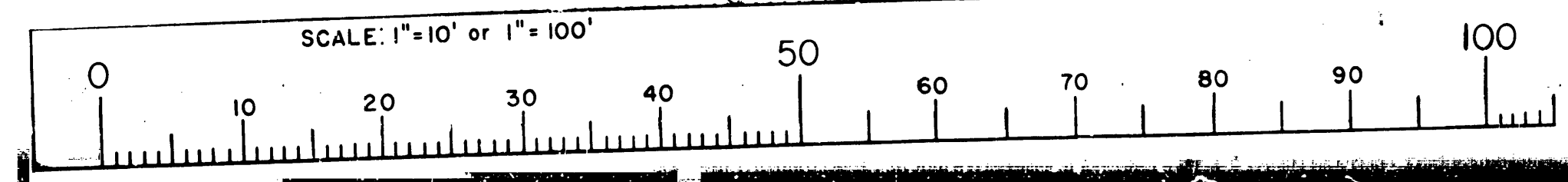
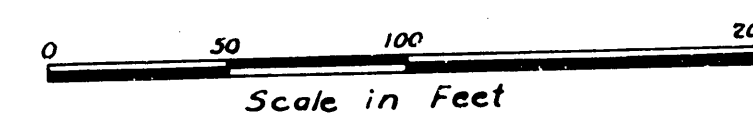
CITY OF SAN LEANDRO
ALAMEDA COUNTY, CALIFORNIA

SCALE: 1" = 50' OCT., 1959

L. CEDRIC MACABEE
CIVIL ENGINEER

23B2103M

SHEET NO. 2 OF 2 SHEETS
AQ151952 FILED DEC. 23, 1959 BOOK 41 PAGE 66



200