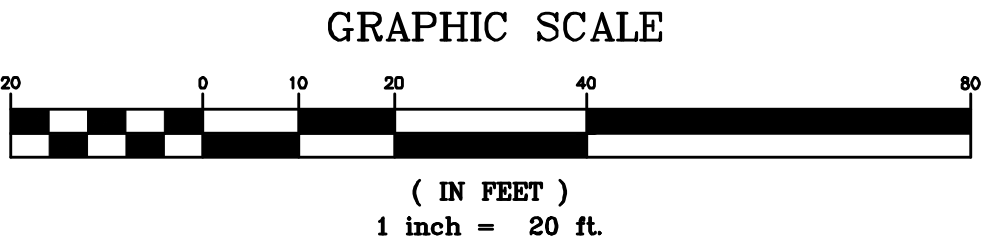


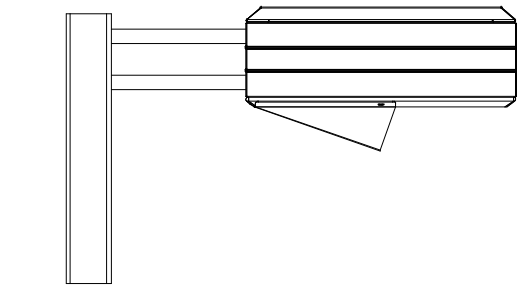
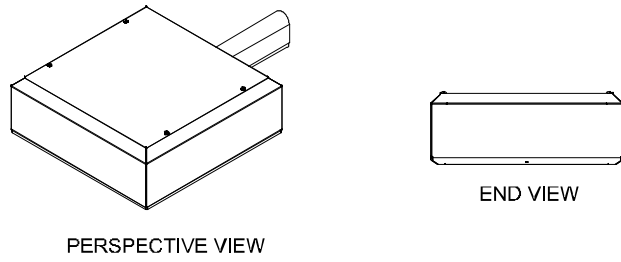
Schedule									
Symbol	Label	Quantity	Manufacturer	Catalog Number	Description	Lamp	Number Lamps	Lumens Per Lamp	Light Loss Factor
	A	2			VILLA LIGHTING- XGBM-FT-LED-HO-NW-HSS	CONTACT JEFF CLAUS- 314-531-2600	1	17359.83	1
	B	2			VILLA LIGHTING- XGBM-3-LED-HO-NW-HSS	CONTACT JEFF CLAUS- 314-531-2600	1	14079.29	1
	D	2	LSI INDUSTRIES		VILLA LIGHTING- XGBM-FT-LED-HO-NW	CONTACT JEFF CLAUS- 314-531-2600	1	23518.03	1

Statistics					
Description	Symbol	Avg	Max	Min	Avg/Min
CALC SUMMARY- PAVED SURFACE	+	5.2 fc	19.7 fc	1.0 fc	19.7:1
CALC SUMMARY- PROPERTY LINE	+	0.9 fc	5.0 fc	0.0 fc	N/A
TRASH ENCLOSURE	+	7.3 fc	10.3 fc	5.1 fc	2.0:1

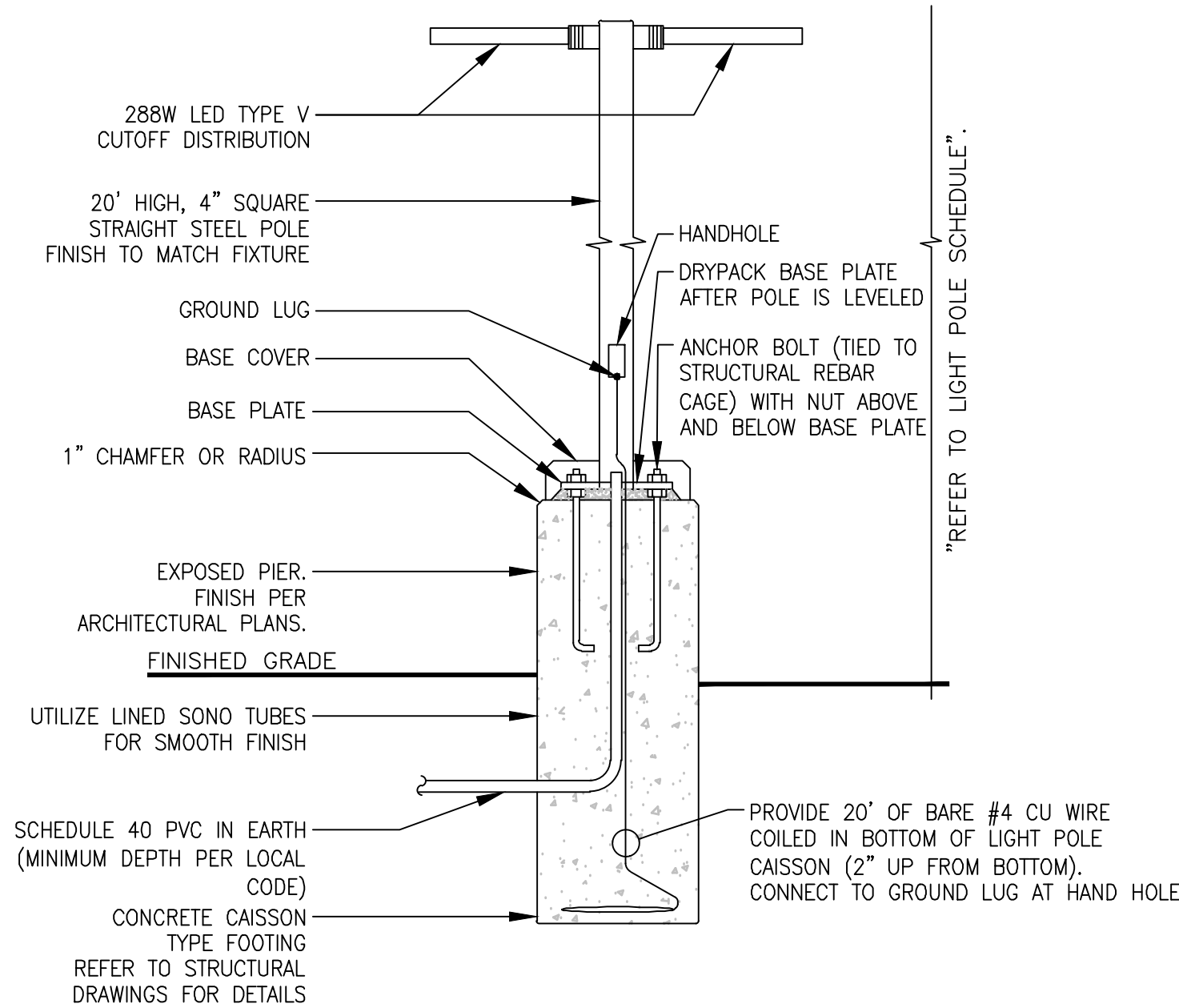
Note  
1. Mounting height of 22' (20' pole)  
2. Calculations taken at ground level.  
3. Contact Villa Lighting- Jeff Claus- 314-531-2600- jeff.claus@villalighting.com



SITE LIGHTING PLAN AND LIGHT FIXTURE SCHEDULE 1  
Scale= 1"=20' C-6.0



NOTE:  
REFER TO LUMINAIRE SCHEDULE FOR LIGHT FIXTURE ORDER NUMBER.  
SITE LIGHT FIXTURE DETAIL



#### SITE LIGHT POLE DETAIL

##### SITE LIGHTING POLE SELECTION:

POLE SELECTION:  
MOUNTING HEIGHT: 22'  
POLE HEIGHT: 20'  
OUTSIDE DIMENSIONS: 4"  
MATERIAL: S11G  
BOLT CIRCLE: B

ORDERING INFORMATION:  
POLE SERIES: 4SQB5 - 5" TRADITIONAL DRILLING PATTERN  
MATERIAL: S11G - 11 GA. STEEL  
HEIGHT: 20'  
MOUNTING CONFIGURATION: S- SINGLE/PARALLEL  
D 180' - DOUBLE

POLE FINISH: BRZ- BRONZE

ACCESSORY ORDERING INFORMATION:  
DESCRIPTION: 4BC - 4" SQUARE BASE COVER ORDER NUMBER:  
122559CLR

LIGHT DETAILS AND KEY NOTES A  
Scale= NTS C-6.0



PANDA RESTAURANT GROUP INC.  
1683 Walnut Grove Ave.  
Rosemead, California  
91770  
Telephone: 626.799.9898  
Facsimile: 626.372.8288

All ideas, designs, arrangement and plans indicated or represented by this drawing are the property of Panda Express Inc. and were created for use on this specific project. None of these ideas, designs, arrangements or plans may be used by or disclosed to any person, firm, or corporation without the written permission of Panda Express Inc.

##### REVISIONS:

##### ISSUE DATE:

1ST PERMIT SET 09-23-16  
2ND BID SET 12-21-16

DRAWN BY: P. FLEMING

PANDA PROJECT #: S8-17-D5084  
ENG PROJECT #: 201608060

**GreenbergFarrow**

3 Executive Drive, Suite 150  
Somerset, NJ 08873  
t: 732.537.0811  
www.greenbergfarrow.com

JOHN NOURZAD  
PROFESSIONAL ENGINEER  
LICENSE NO. 18106

PANDA EXPRESS

WARM & WELCOME V2  
1065 PINE LOG ROAD  
AIKEN, SC 29801

C-6.0

LIGHTING PLAN