

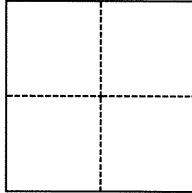
CORNER RECORD

Agency Index **BK** 107 PG 48
Document Number CR 11023

City of OAKLAND County of ALAMEDA, California
Brief Legal Description WELL MONUMENTS LOCATED WITHIN LEONA ST.

CORNER TYPE

COORDINATES (Optional)



- ☐ Government Corner ☒ Control
☐ Meander ☐ Property
☐ Rancho ☐ Other

N. _____ E. _____

Elevation _____

Units ☐ Metric ☐ U.S. Survey Foot

Horizontal Datum _____

Zone _____ Epoch Date _____

Vertical Datum _____

☐ Complies with Public Resources Code §§8801-8819

☐ Complies with Public Resources Code §§8890-8902

PLS Act Ref.: ☐ 8765(d) ☒ 8771 ☐ 8773 ☐ Other:
Corner/
Monument: ☐ Left as found ☐ Established ☐ Rebuilt ☒ Pre-Construction
☐ Found and tagged ☐ Reestablished ☐ Referenced ☐ Post-Construction

Narrative of corner identified and monument as found, set, reset, replaced, or removed:

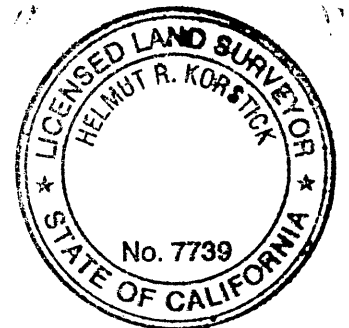
☒ See sheet #2 for description(s): FOUND PIN IN WELL MONUMENT AS SHOWN ON OAKLAND MONUMENT MAP AT THE LOCATIONS AS SHOWN ON SHEET 2. SET REFERENCE NAIL AND TAGS LS 7739. SEE SHEET 2.

SURVEYOR'S STATEMENT

This Corner Record was prepared by me or under my direction in conformance with

the Professional Land Surveyors' Act on APRIL 25, 2018

Signed [Signature] P.L.S. or R.C.E. No. PLS 7739



COUNTY SURVEYOR'S STATEMENT

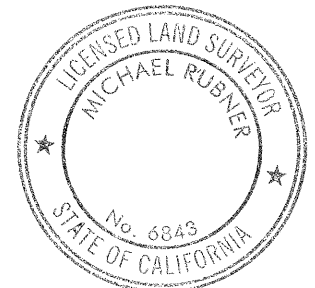
This Corner Record was received 15 FEBRUARY 2018

and examined and filed 15 MAY 2018

Signed Michael Rubner P.L.S. or R.C.E. No. 6843

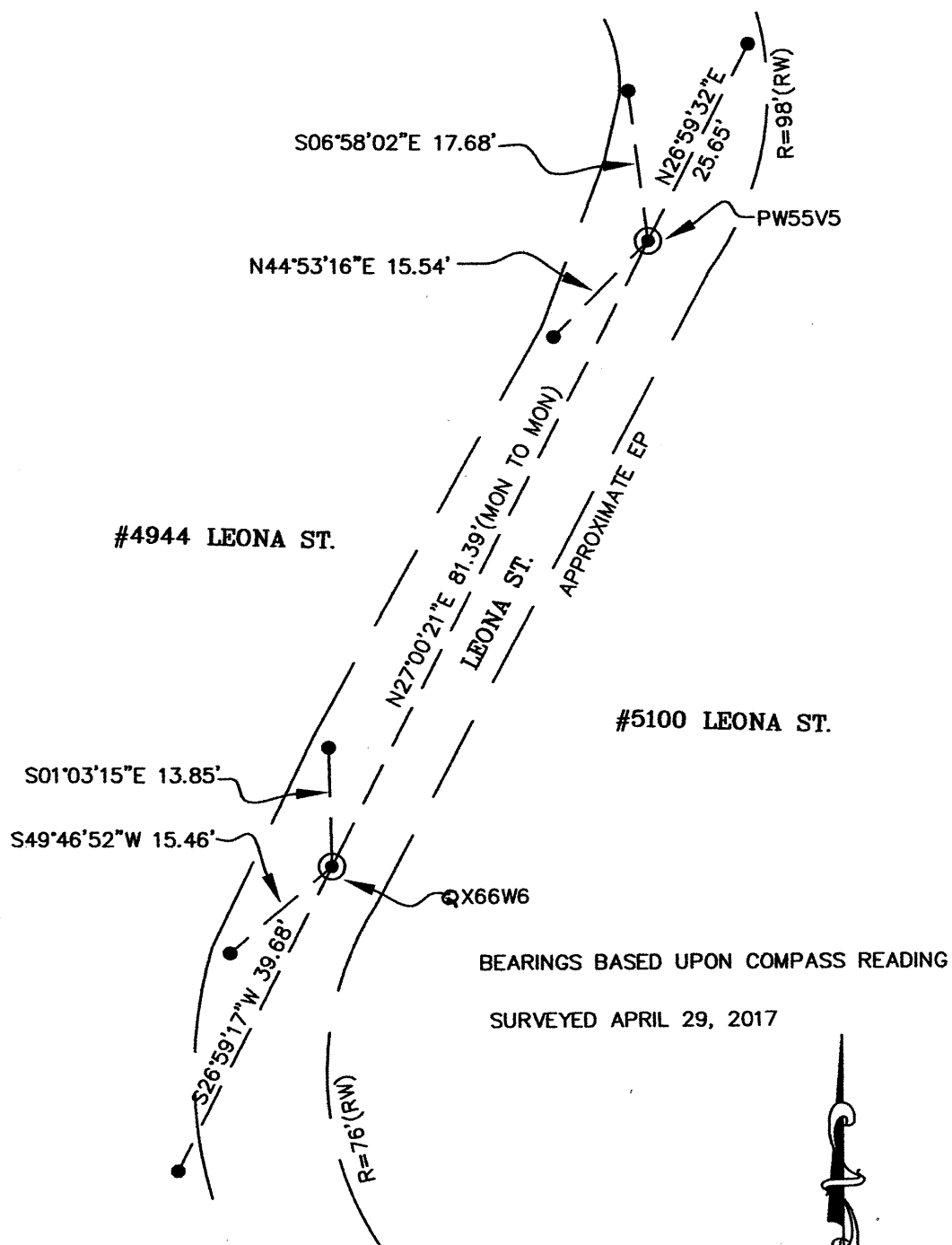
Title COUNTY SURVEYOR

County Surveyor's Comment



Doc. No. CR11023

AGENCY INDEX



● SET LEAD PLUG WITH BRASS TAG LS 7739
REFERENCE POINTS

⊙ FND PIN IN CONC IN WELLMON
REFERENCE CITY OF OAKLAND MONUMENT MAP PAGE 157