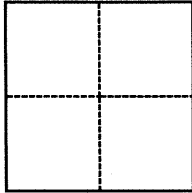


CORNER RECORD

Agency Index BK 104 PG 8
Document Number CR 10856

City of OAKLAND County of ALAMEDA, California
Brief Legal Description CENTER LINE INTERSECTION OF TELEGRAPH AVE AND 30TH AVE

CORNER TYPE



- ☐ Government Corner ☐ Control
☐ Meander ☒ Property
☐ Rancho ☐ Other

Date of Survey November 30, 2017

COORDINATES (Optional)

N. _____ E. _____
Elevation _____
Units ☐ Metric ☒ U.S. Survey Foot
Horizontal Datum _____
Zone _____ Epoch Date _____
Vertical Datum _____
☐ Complies with Public Resources Code §§8801-8819
☐ Complies with Public Resources Code §§8890-8902

PLS Act Ref.: ☐ 8765(d) ☒ 8771 ☐ 8773 ☐ Other:
Corner/Monument: ☐ Left as found ☐ Established ☐ Rebuilt ☒ Pre-Construction
☐ Found and tagged ☐ Reestablished ☒ Referenced ☐ Post-Construction

Narrative of corner identified and monument as found, set, reset, replaced, or removed:

☐ See sheet #2 for description(s):

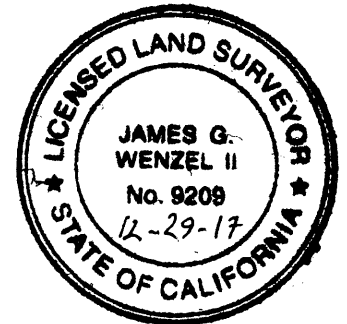
FOUND PIN IN CONCRETE NO TAG IN CITY WELL MONUMENT PER 90 CR 42
FOUND LEAD AND TAG STAMPED "PLS 8297" PER 90 CR 42

SURVEYOR'S STATEMENT

This Corner Record was prepared by me or under my direction in conformance with

the Professional Land Surveyors' Act on November 13, 2017

Signed [Signature] P.L.S. or R.C.E. No. 9209



COUNTY SURVEYOR'S STATEMENT

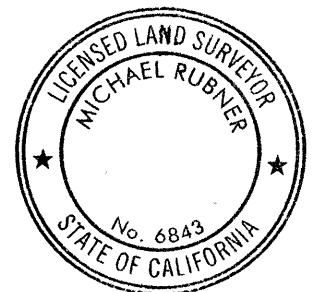
This Corner Record was received 11 DECEMBER 2017

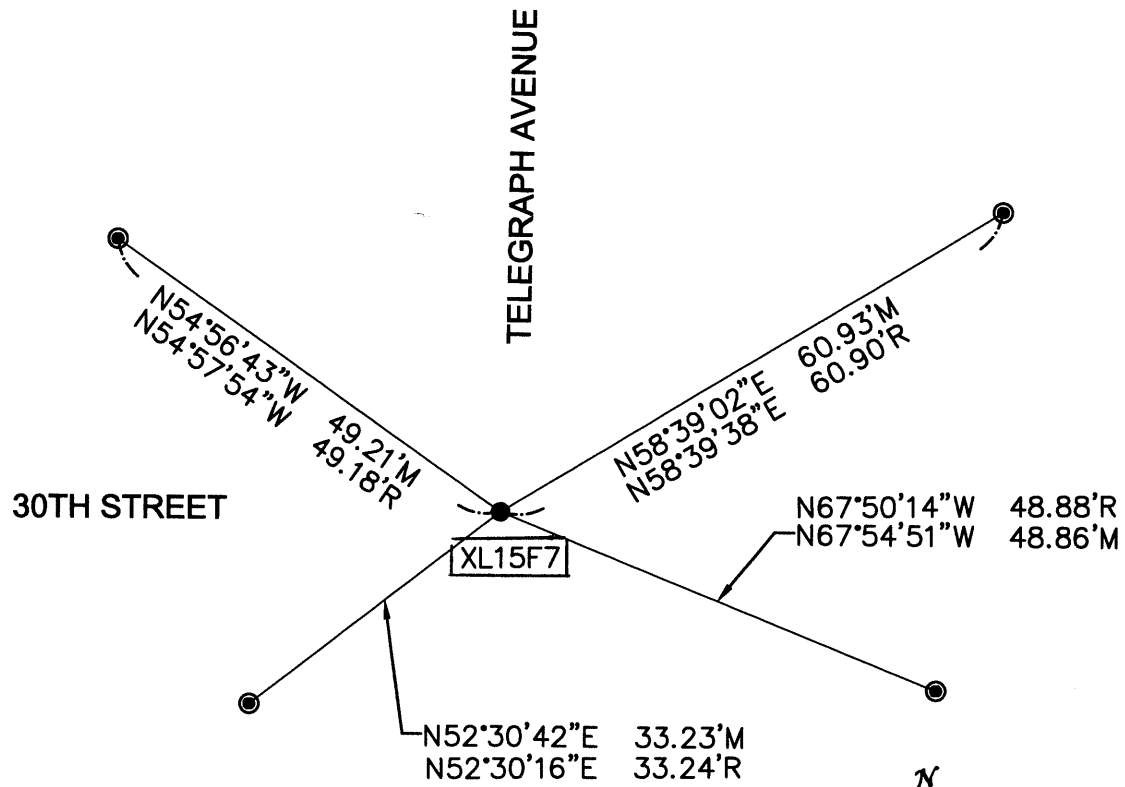
and examined and filed 12 JANUARY 2018

Signed Michael Rubner P.L.S. or R.C.E. No. 6843

Title COUNTY SURVEYOR

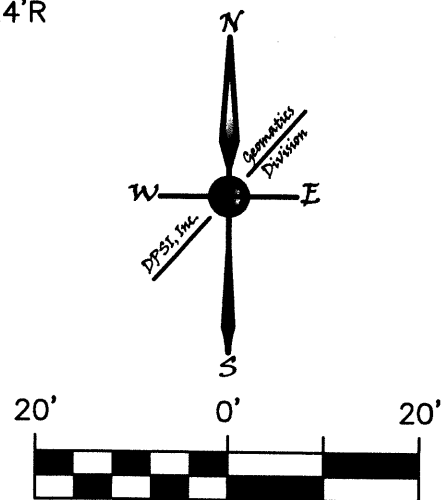
County Surveyor's Comment



LEGEND*R = 90 CR 42*

● = FOUND PIN IN CONCRETE PER R

⊙ = FOUND NAIL AND TAG STAMPED PLS 8297 PER R



SCALE: 1"=20'