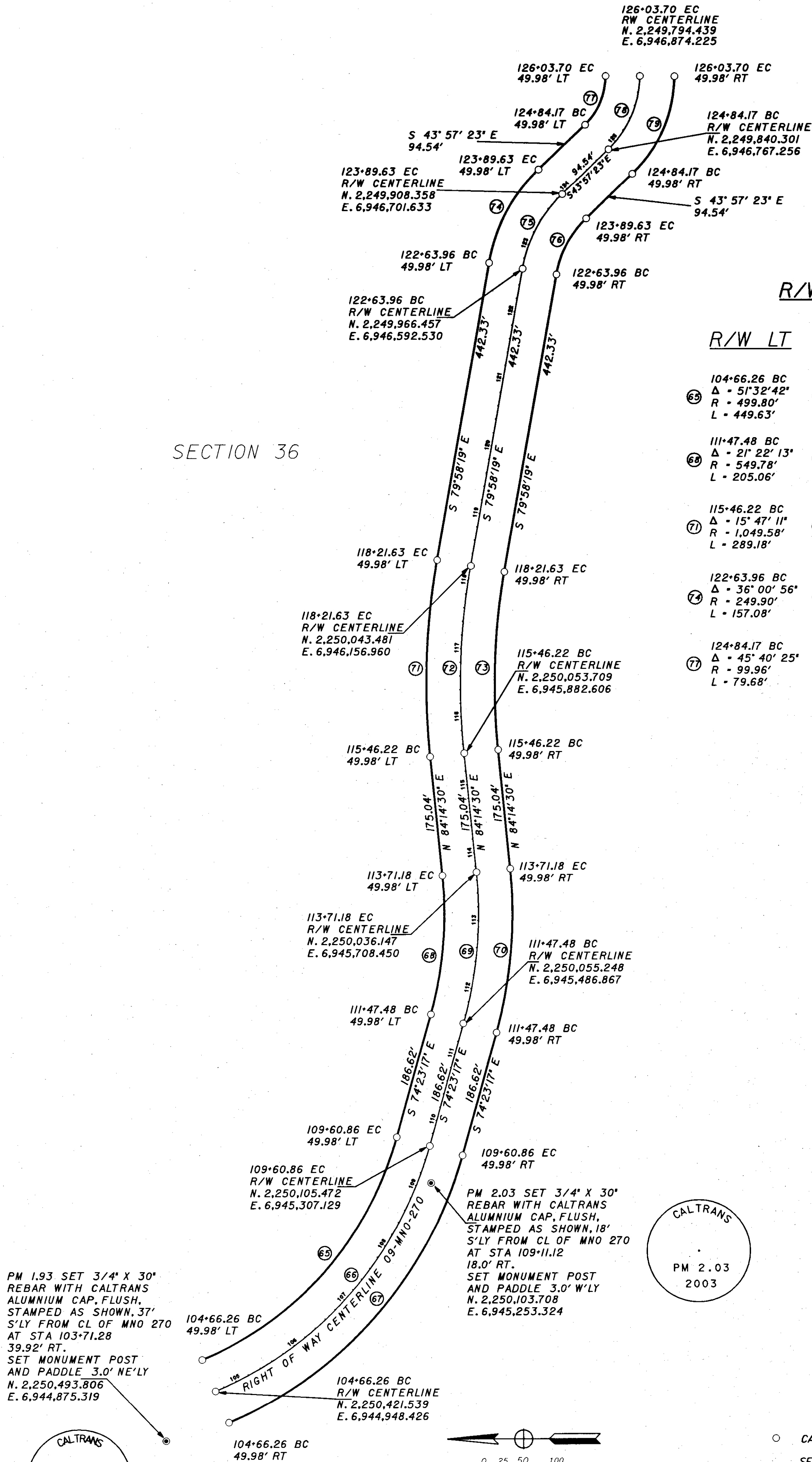


# RECORD OF SURVEY NO. 33-09 SECTION 36, TOWNSHIP 4 NORTH, RANGE 25 EAST, M.D.B. & M.

SHEET 9 OF 27

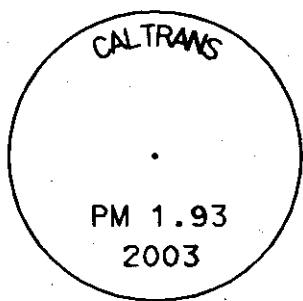
SECTION 36



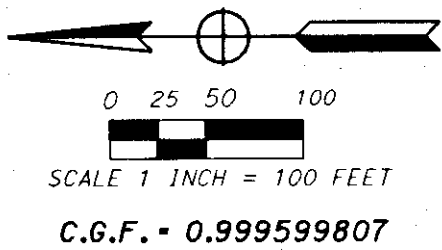
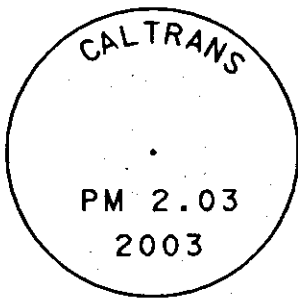
## R/W CURVE DATA

R/W LT	R/W C	R/W RT
104+66.26 BC Δ - 51° 32' 42" R - 499.80' L - 449.63'	104+66.26 BC Δ - 51° 32' 42" R - 499.80' L - 449.60'	104+66.26 BC Δ - 51° 32' 42" R - 599.76' L - 539.56'
111+47.48 BC Δ - 21° 22' 13" R - 549.78' L - 205.06'	111+47.48 BC Δ - 21° 22' 13" R - 599.76' L - 223.70'	111+47.48 BC Δ - 21° 22' 13" R - 649.74' L - 242.34'
115+46.22 BC Δ - 15° 47' 11" R - 1,049.58' L - 289.18'	115+46.22 BC Δ - 15° 47' 11" R - 999.60' L - 275.42'	115+46.22 BC Δ - 15° 47' 11" R - 949.62' L - 261.64'
122+63.96 BC Δ - 36° 00' 56" R - 249.90' L - 157.08'	122+63.96 BC Δ - 36° 00' 56" R - 199.92' L - 125.67'	122+63.96 BC Δ - 36° 00' 56" R - 149.94' L - 94.25'
124+84.17 BC Δ - 45° 40' 25" R - 99.96' L - 79.68'	124+84.17 BC Δ - 45° 40' 25" R - 149.94' L - 119.53'	124+84.17 BC Δ - 45° 40' 25" R - 199.92' L - 159.37'

PM 1.93 SET 3/4" X 30"  
REBAR WITH CALTRANS  
ALUMNIUM CAP, FLUSH,  
STAMPED AS SHOWN, 37'  
S'LY FROM CL OF MNO 270  
AT STA 103+71.28  
39.92' RT.  
SET MONUMENT POST  
AND PADDLE 3.0' NE'LY  
N. 2,250,493.806  
E. 6,944,875.319



PM 2.03 SET 3/4" X 30"  
REBAR WITH CALTRANS  
ALUMNIUM CAP, FLUSH,  
STAMPED AS SHOWN, 18'  
S'LY FROM CL OF MNO 270  
AT STA 109+11.12  
18.0' RT.  
SET MONUMENT POST  
AND PADDLE 3.0' W'LY  
N. 2,250,103.708  
E. 6,945,253.324



## LEGEND:

- CALCULATED POSITION, NOTHING FOUND OR SET
- SET CALTRANS ALUMINIUM CAP ON 3/4" REBAR STAMPED AS NOTED
- ⊙ FOUND MONUMENT AS NOTED
- ◆ LAND NET CORNER AS NOTED