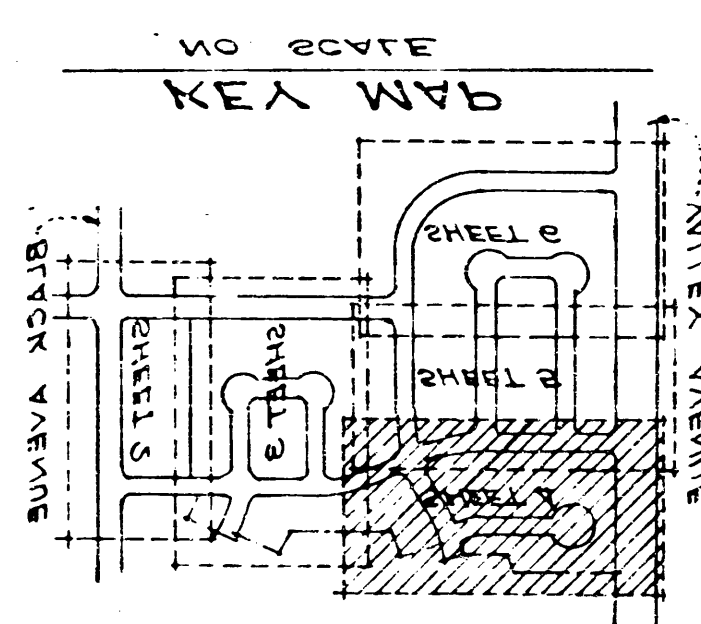
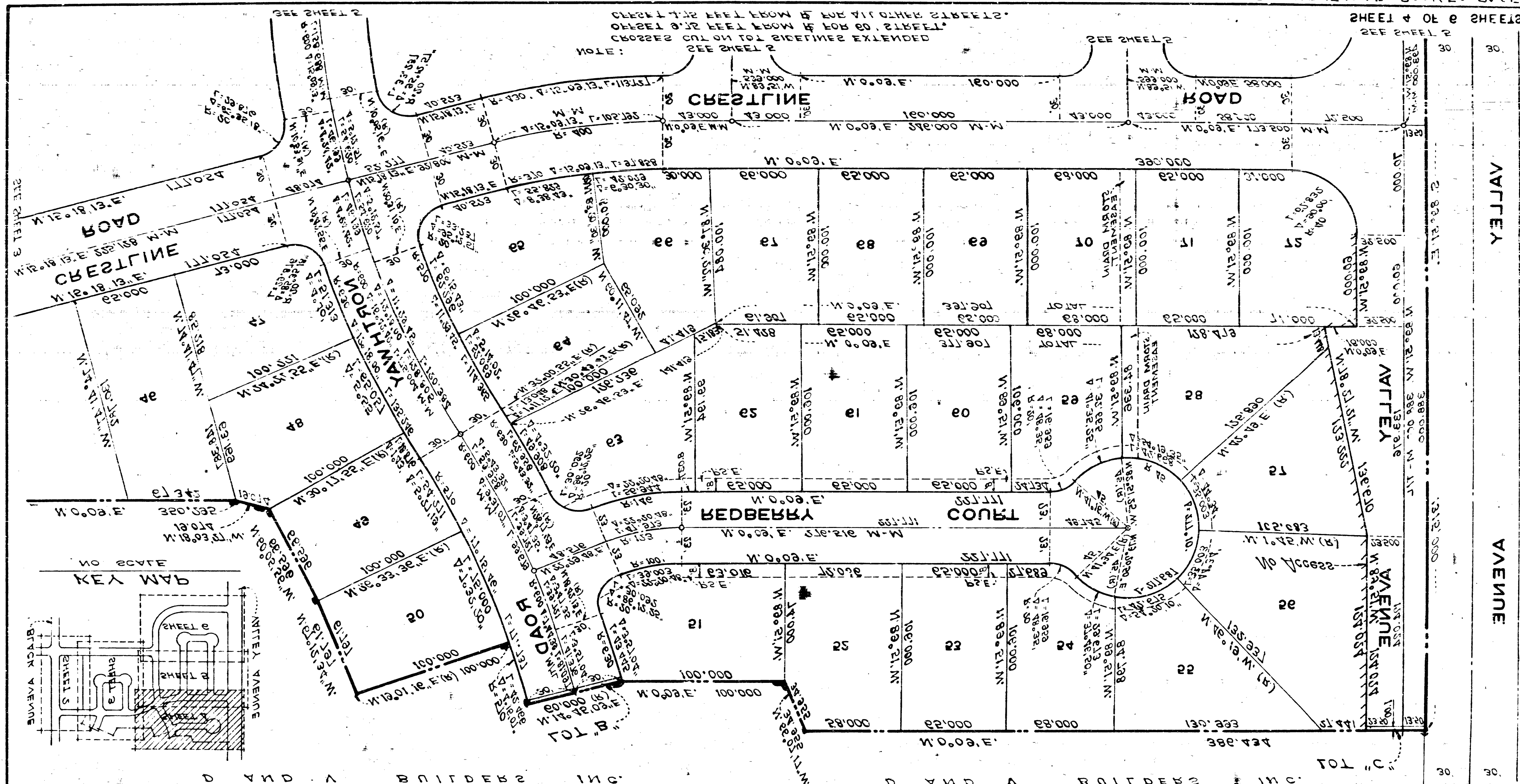


423

AX3H272 FILED MAR 12 1962 BOOK 20 PAGE 1081

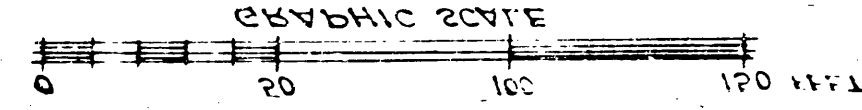
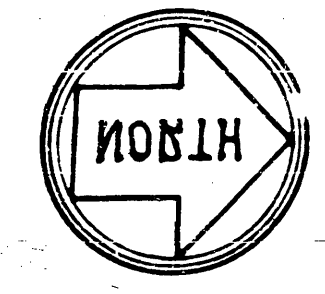


D AND A BUILDERS INC.  
SCALE: 1"=40'  
NOVEMBER 1961  
CIVIL ENGINEERS  
MARTIN A. EISSELT

ALAMEDA COUNTY, CALIFORNIA  
CITY OF PLEASANTON  
PLEASANTON VALLEY-UNIT 3  
TRACT 5880

PUBLIC SERVICE EASEMENTS DESIGNATED - P.S.E.  
EXISTING MONUMENTS SHOWN THUS: [Symbol]  
TO BE INSTALLED SHOWN THUS: [Symbol]  
STANDARD CONCRETE CITY MONUMENTS TO  
LEGEND:  
CITY OF PLEASANTON ZONING ORDINANCE:  
BUILDING SET-BACK LINES TO BE AS REQUIRED BY THE  
BUILDING SET-BACK LINES:  
CENTER LINE OF BLACK AVENUE WAS TAKEN AS N. 89.21. W.  
BASIS OF BEARINGS:

DEPARTMENT OF PUBLIC WORKS  
CITY OF PLEASANTON  
APPROVED FOR RECORDING  
[Signature]



20 / e-1-b