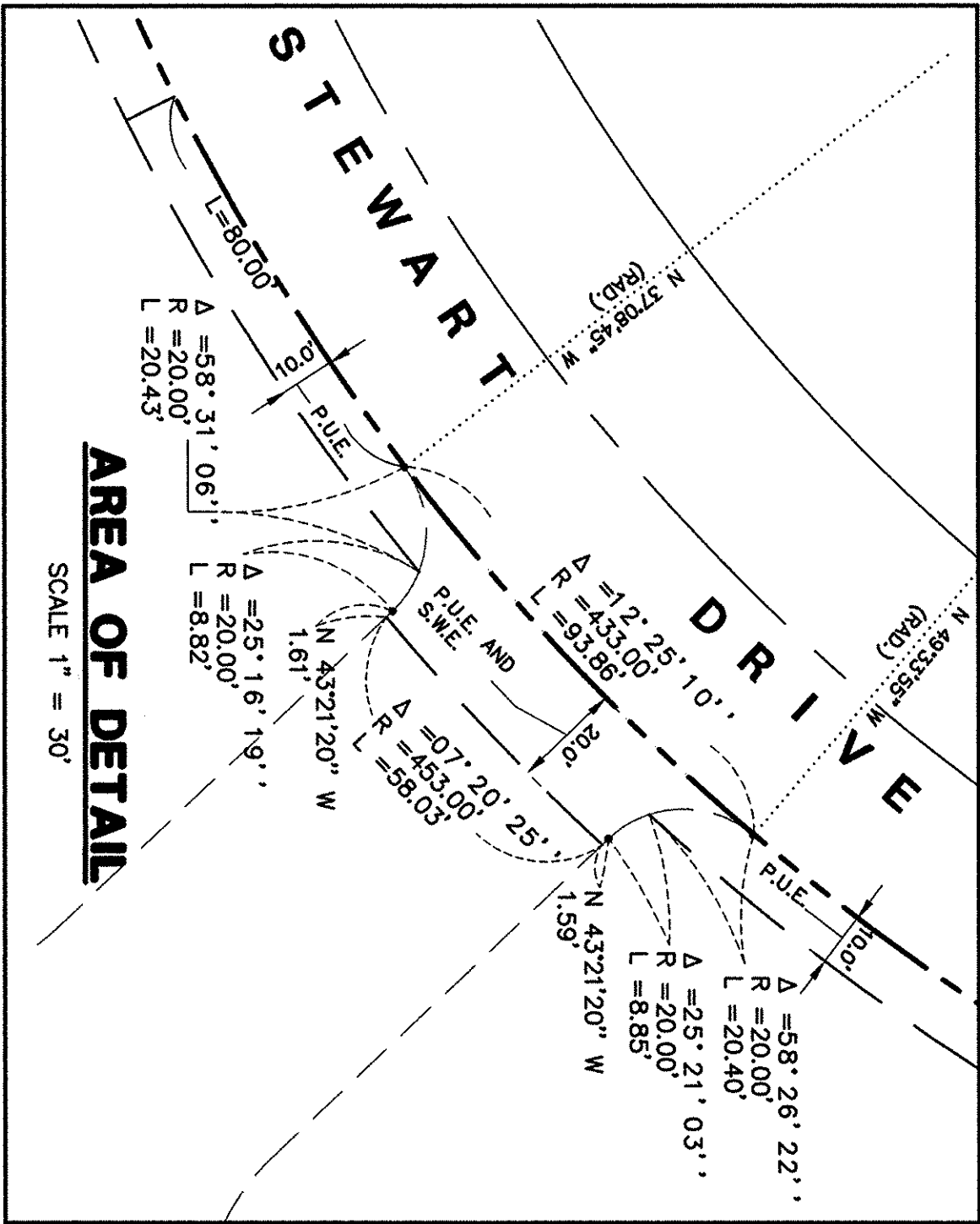
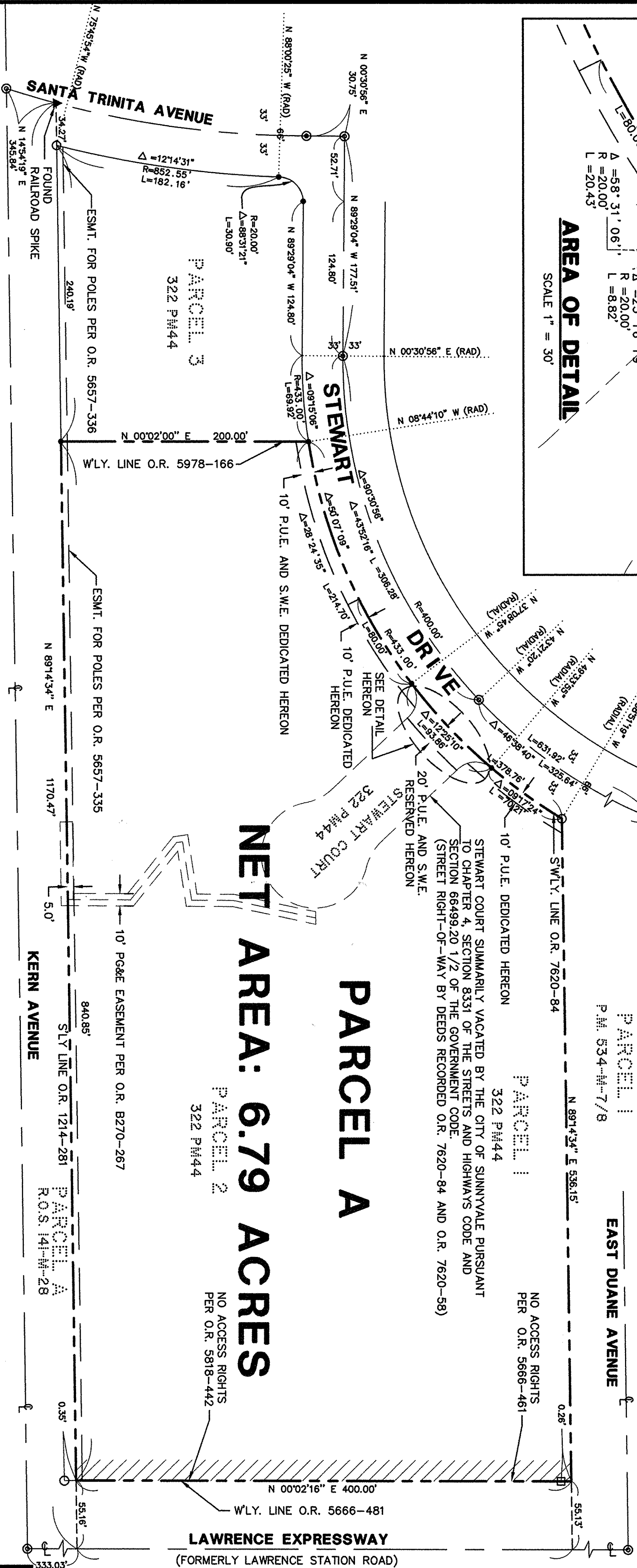
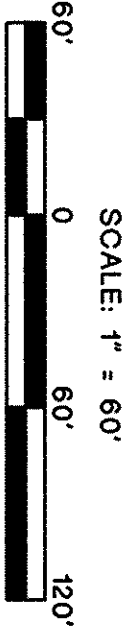


# PARCEL MAP

BEING A MERGER OF PARCELS 1 AND 2 AND STEWART COURT OF THAT PARCEL MAP FILED IN BOOK 322 OF MAPS, PAGE 44 OF THE RECORDS OF THE COUNTY OF SANTA CLARA, STATE OF CALIFORNIA.



- LEGEND**
- FOUND 1/2" IRON PIPE
  - FOUND 1 1/2" IRON PIPE, RCE 7595
  - FOUND 3/4" IRON PIPE, RCE 18720
  - ⊙ FOUND WELL MONUMENT WITH 1 1/4" IRON PIPE AND COUNTY TAG
  - ▨ NO ACCESS
  - ▨ P.U.E. PUBLIC UTILITIES EASEMENT
  - ▨ S.W.E. SIDEWALK EASEMENT



**NOTE:**

THIS MAP WAS PREPARED BY USING RECORD DATA FROM P.M. 322/44, SANTA CLARA COUNTY.

**RMA**

RON MARTIN & ASSOCIATES  
ENGINEERING, SURVEYING

942 GALE NECCO, SUITE 100  
SAN CLEMENTE, CA 92673  
PH. (714) 389-8080 FAX (714) 389-8083

Plot date: 1997/12/05 - 08:36