

OVERALL LENGTH	491' - 7 1/2"
LENGTH BETWEEN PERPENDICULARS	465' - 0"
BREADTH MOLDED	69' - 6"
DEPTH MOLDED TO SHELTER DECK	42' - 6"
HEIGHT OF MAIN MAST (ABOVE D.W.L.)	112' - 0"
DESIGN WATER LINE	28' - 6"

NO.	NO. PERSONS	LOCATION	DIMENSIONS	TOTAL
4	25	SHELTER DK. FR. 37-40 P. & S.	9'-0" x 5'-0" x 11"	100
5	"	" " " 50-52 STBD.	" " "	125
12	"	" " " 63-69 P. & S.	" " "	300
1	"	" " " 142-143 C	" " "	25
1	"	" " " 152-155 PORT	" " "	25
4	40	" " " 71-73 P. & S.	11'-6" x 7'-0" x 15"	160
1	"	" " " 85-89 STBD.	" " "	40
3	"	" " " 135-140 PORT	" " "	120
1	"	" " " 147-150 "	" " " "	40
1	"	" " " 157-161 STBD.	" " "	40
1	"	" " " 175-179 "	" " " "	40
4	"	" " " 184 AFT P/S	" " "	160
1	60	" " " 26-30 STBD.	13'-0" x 8'-6" x 16"	60
4	"	" " " 44-50 P. & S.	13'-0" x 8'-6" x 16"	240
4	"	" " " 141-151 "	" " "	240
3	"	" " " 156-161 "	" " " "	180
2	"	" " " 166-171 PORT	" " " "	120
3	"	" " " 176-180 P. & S.	" " "	180
1	25	CABIN DK. FR. 109-111 STBD.	9'-0" x 5'-0" x 11"	25
3	40	" " " 96-104 P. & S.	11'-6" x 7'-0" x 15"	120
1	40	" " " 126-130 STBD.	" " "	40
1	60	" " " 103-107 PORT	13'-0" x 8'-6" x 16"	60
2	"	" " " 122-130 "	" " " "	120
2	40	BOAT DECK FR. 101-104 STBD.	11'-6" x 7'-0" x 15"	80
2	60	" " " 100-106 PORT	13'-0" x 8'-6" x 16"	120
68				2760

NO.	TYPE AND LOCATION	DIMENSION	CAPACITY
24	MOTOR WHALE BOAT BOAT DECK	26'-0"	22 MEN

LOCATION	TYPE	TYPE "B-1"			TYPE "B-2"			TYPE "D"			NO.OF INDIV. LKRS	BUILT IN LKRS
	"A"	1HIGH	2HIGH	3HIGH	1HIGH	2HIGH	3HIGH	1HIGH	2HIGH	3HIGH		
		SG	DB	SG	DB	SG	DB	SG	DB	SG		
2ND.DK.FRS.149-178 ^{1/2}	1				103							310
" " " 178-197"					11							33
SHELTER DK.FR.99-129 ^{1/2}	36 ^{1/2}									3		436
CABIN DECK P. & S.												17
BOAT DECK P. & S.												13
2ND DK FRS 60-61 STBD										3		6

SG. = SINGLE
DB. = DOUBLE
EXAMPLE: ONE B-1 3HIGH SINGLE = 3INDIVIDUAL LOCKERS

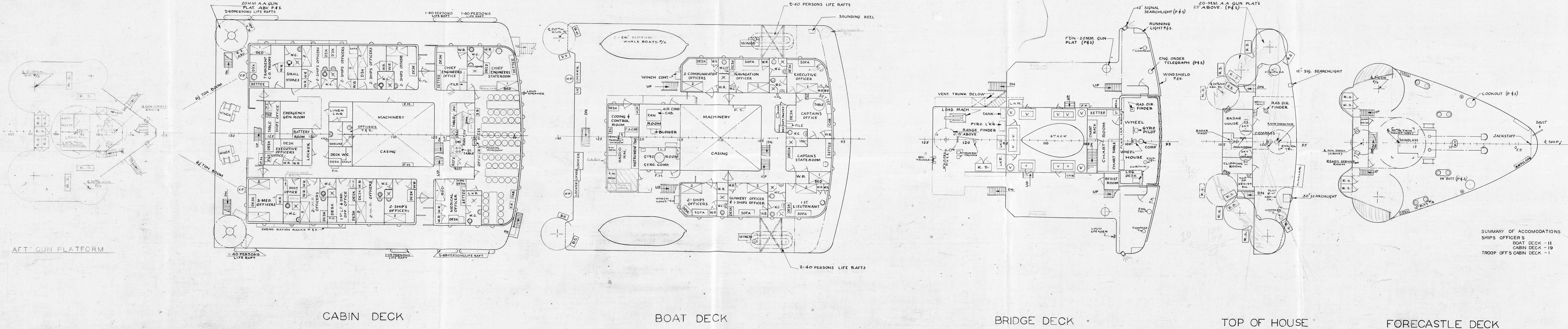
LOCATION	OFF'S	C.P.O.'S	CREW	TR00P	TR.OFF.	TOTAL
BOAT DECK	10					13
CABIN DECK	19					20
SHELTER DK.FRS. 99-129 P. & S.	8	24			11	43
2ND.DK.FRS. 24-47 P. & S.				234		234
" " " 47-71 "				342	48	390
" " " 122-141 "				48	57	105
" " " 149-196 "			342			342
3RD.DK.FRS. 13-47 "				406		406
" " " 47-71 "				487		487
" " " 122-149 "				575		575
	41	24	342	2092	116	2615

NO.	KIND	LOCATION	HEIGHT ABOVE D.W.L.
1	FOWD. ANCHOR LIGHT	JACKSTAFF	52' - 6"
1	MAST HEAD LIGHT	FOREMAST	88' - 6"
1	UPPER TOWING LT.	"	81' - 0"
1	LOWER " "	"	75' - 0"
1	AIRCRAFT & SPEED LT.	"	102' - 0"
4	VERTICAL FIGHTING	" P. & S.	98'-0" - 86'-
2	" "	KINGPOST FR. 46 P. & S.	66' - 6"
2	BLINKER LT.	" " 94 "	73' - 0"
1	AIRCRAFT & SPEED LT.	MAIN MAST	112' - 0"
1	RANGE LT.	" " " "	102' - 0"
1	MAN OVERBOARD LT.	" " " "	90' - 6"
1	BREAKDOWN LT.	" " " "	85' - 3"
1	AFT ANCHOR LT.	ON STAFF AT STERN	33' - 6"
1	SCREENED SPEED LT.	" " " "	29' - 6"
1	STERN (BLUE)	AFT CHOCK	26' - 3"
1	STERN (CLEAR)	" "	" "
1	WAKE LIGHT	" "	25' - 0"

DECK	FRAME	P. OR S.	DECK	FRAME	P. OR S.
BRIDGE	105	PORT	2 ND.	24	STBD.
FORECASTLE	18	STBD.	"	41 1/2	CENTER LINE
"	19 1/2	CENTER LINE	"	70 1/2	STBD.
BOAT	108	PORT	"	71	P. & S.
"	118	STBD.	"	93 1/2	PORT
CABIN	108	P. & S.	"	103	P. & S.
"	126	STBD.	"	122	PORT
SHELTER	18	P. & S.	"	144	STBD.
"	45 1/2	PORT	"	149	P. & S.
"	70	STBD.	"	178	STBD.
"	93 1/2	CENTER LINE	"	183	CENTER LINE
"	94	PORT	3 RD.	23	" "
"	107	"	"	40	" "
"	107 1/2	"	"	47	PORT
"	112 1/2	P. & S.	"	70	P. & S.
"	129	STBD.	"	123	CENTER LINE
"	150	"	"	149	P. & S.
"	181	PORT	"	182	STBD.
			HOLD	122	"

GEN. DIMENSIONS AND DATA

BUREAU OF SHIPS PLAN NO. 4842

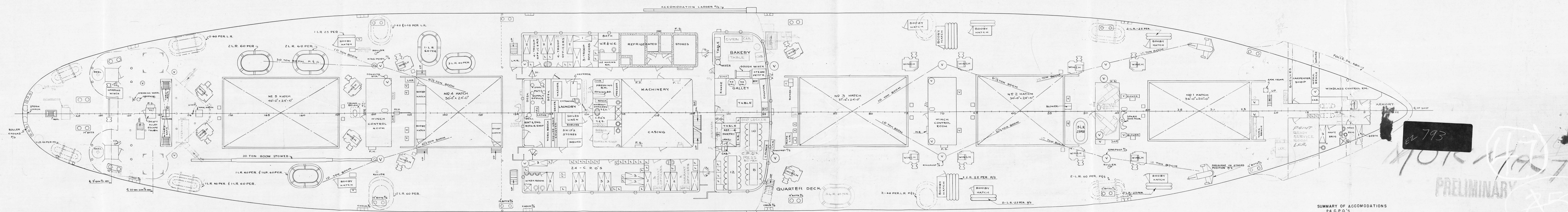


PRELIMINAR

AP-71
CABIN, BOAT, BRIDGE,
HOUSE TOP, FOC'SLE D'KS

SCALE: 1/16" = 1'-0"

BUREAU OF SHIPS PLAN NO. 484202

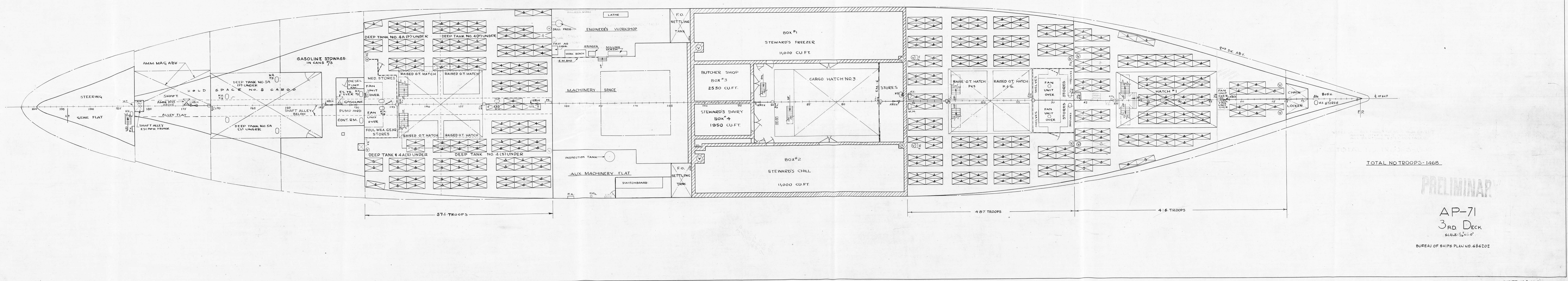


A P-71
 SHELTER DK.
 SCALE: 1/16"=1'-0"

BUREAU OF SHIPS PLAN NO. 484202

2ND. DECK.

BUREAU OF SHIPS PLAN NO. 484202





SCALE: $\frac{1}{16}'' = 1'-0''$

SHEET NO. 9 OF 9