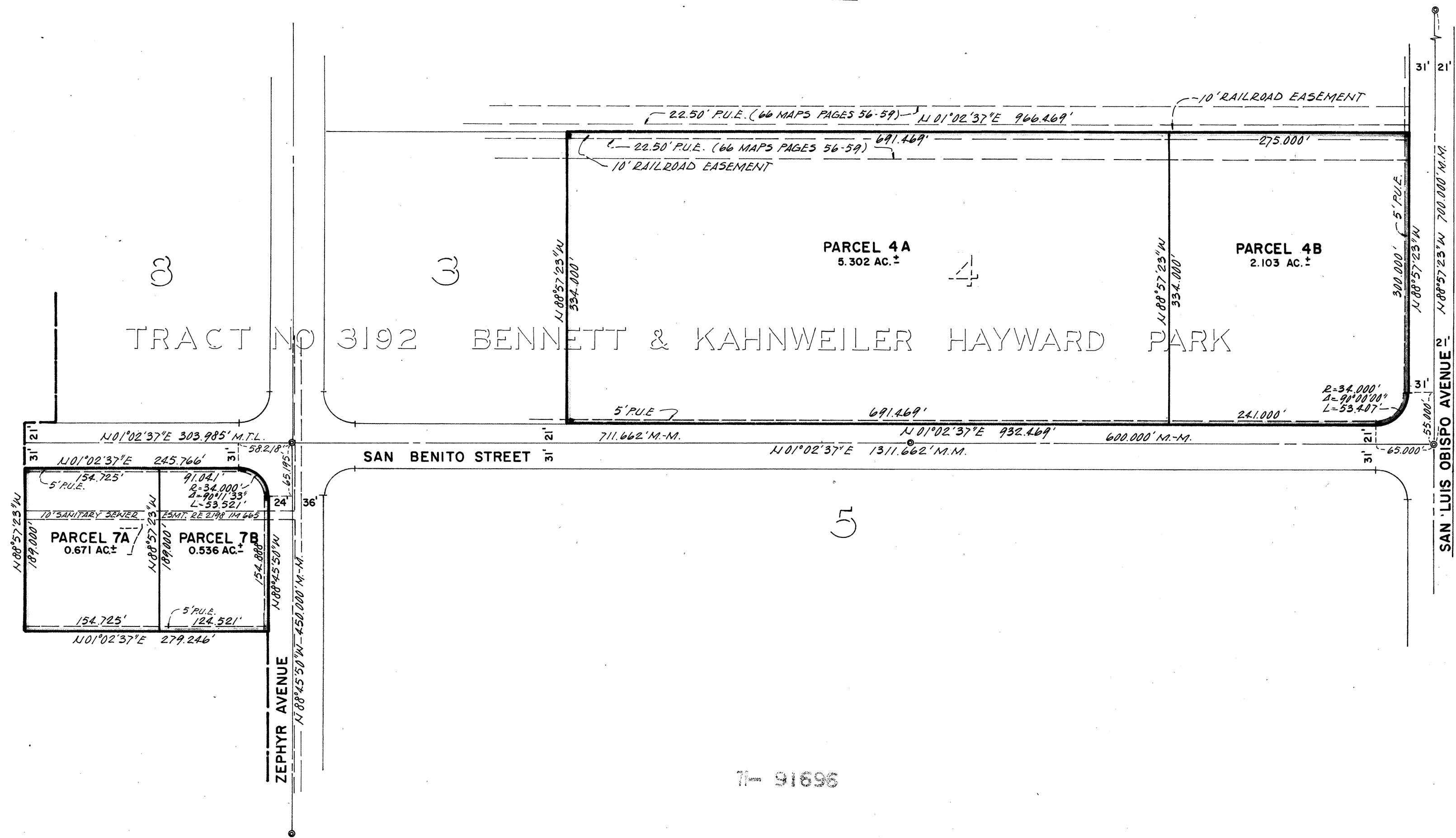


69/78

71- 91696

2



71- 91696

71- 91696

SURVEYOR'S CERTIFICATE

THIS MAP WAS PREPARED BY ME OR UNDER MY DIRECTION AND WAS COMPILED FROM RECORD DATA IN CONFORMANCE WITH THE REQUIREMENTS OF THE SUBDIVISION MAP ACT AT THE REQUEST OF MARC H. MONHEIMER IN MAY, 1971. I HEREBY CERTIFY THAT IT CONFORMS TO THE APPROVED TENTATIVE MAP AND THE CONDITIONS OF APPROVAL THEREOF, THAT ALL PROVISIONS OF APPLICABLE STATE LAW AND LOCAL ORDINANCES HAVE BEEN COMPLIED WITH.

John C. Nuessmann
JOHN C. NUESSMANN L.S. 3439

CITY ENGINEER'S CERTIFICATE

THIS MAP HAS BEEN EXAMINED THIS 9th DAY OF July, 1971 FOR CONFORMANCES WITH THE REQUIREMENTS OF SECTION 11575 OF THE SUBDIVISION MAP ACT.

Douglas S. Cruickshank
DOUGLAS S. CRUICKSHANK - R.C.E. 6918

RECORDER'S CERTIFICATE

FILED THIS 21st DAY OF JULY, 1971 AT 9:00 A.M. IN BOOK 69 OF MAPS AT PAGE 78, AT THE REQUEST OF DOUGLAS S. CRUICKSHANK.

FILE NO. 71-91696
FEE \$5.00
JACK G. BLUE
JACK G. BLUE, COUNTY RECORDER
BY *John Bruce*
DEPUTY COUNTY RECORDER

RECORD OWNER

MARC H. MONHEIMER & BRUCE M. COWAN,
AS TRUSTEES OF B/K/P CALIFORNIA TRUST
NUMBER ONE.

LEGEND

- INDICATES STANDARD CITY OF HAYWARD MONUMENT. THE BLUE BORDER INDICATES THE BOUNDARY OF THIS PARCEL MAP.
- ALL DIMENSIONS ARE IN FEET AND DECIMALS THEREOF.

PARCEL MAP NO. 731

BEING A RESUBDIVISION OF LOTS 4 & 7
TRACT NO. 3192
BENNETT & KAHNWEILER HAYWARD PARK
RECORDED DECEMBER 18, 1970
IN BOOK 66 OF MAPS AT PAGES 56-59 INCL.

HAYWARD ALAMEDA COUNTY CALIFORNIA
MAY 14, 1971 **WILSEY & HAM** SCALE: 1"=100'
1035 EAST HILLSDALE BOULEVARD, SAN MATEO, CALIF.