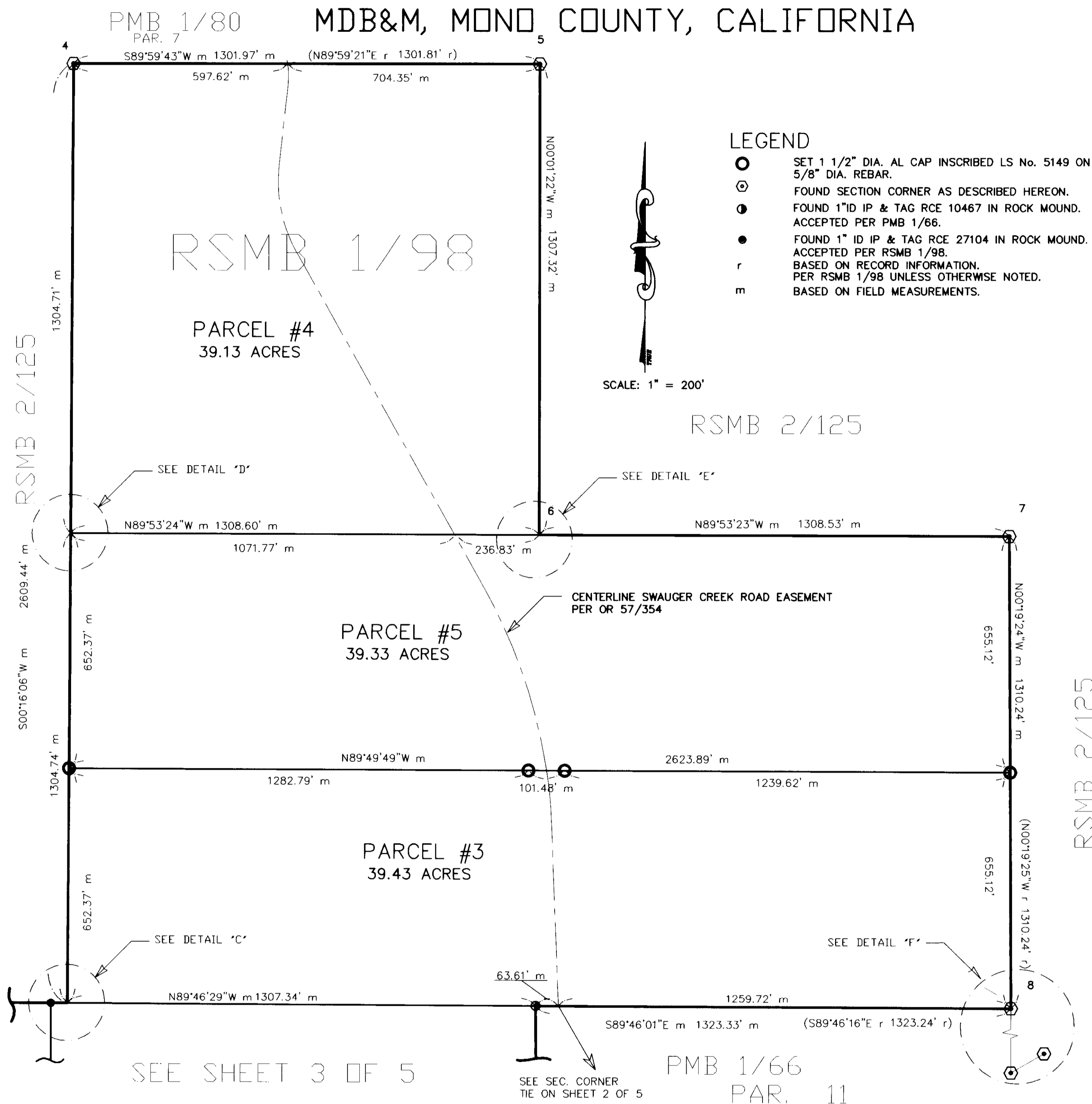


A DIVISION OF A PORTION OF SEC 21, T6N, R24E,
PMB_1/80 MDB&M, MONO COUNTY, CALIFORNIA

PMB_1/80 MDB&M, MONO COUNTY, CALIFORNIA

MDB&M, MONO COUNTY, CALIFORNIA



RSMB 1/98

PARCEL #4
39.13 ACRES

PARCEL #5
39.33 ACRES

PARCEL #3
39.43 ACRES

RSMB 2/125

2025/03/26

SEE SHEET 3 OF 5

PMB 1/66
PAR. 11

DESCRIPTION OF FOUND POINTS

- | | | | |
|----|---|------------------------------|---|
| 4. | FOUND 3 1/4" DIA. AL. CAP IN 10' DIA. ROCK MOUND ON 2 1/2"DIA. AL. PIPE.
BT - 60" DIA. JEFFERY PINE BEARS S40°E, 42' FROM CORNER.
ACCEPTED AS REMONUMENTATION OF ORIGINAL CORNER PER RSMB 2/125. | INSCRIBED:
PER RSMB 2/125 | USFS
T6N R24E
1/4 <u>S16</u>
S21
LS 3848
1990 |
| 5. | FOUND 3 1/4" DIA. AL. CAP IN 3.5' DIA. ROCK MOUND ON 2 1/2"DIA. AL. PIPE.
CAP BEARS N34°18'28"W, 0.21' (N21°51'38"W r, 0.24' R PER RSMB 2/125) FROM
POSITION OF CORNER AS ORIGINALLY DETERMINED PER PMB 1/66. MEASUREMENTS SHOWN
ARE TO ORIGNAL CORNER SET PER PMB 1/66. MONUMENT NOT RESET. | INSCRIBED:
PER RSMB 2/125 | USFS
T6N R24E
E 1/16 <u>S16</u>
S21
LS 3848
1990 |
| 6. | FOUND 3 1/4" DIA. AL. CAP IN 3.5' DIA. ROCK MOUND ON 2 1/2"DIA. AL. PIPE. | INSCRIBED:
PER RSMB 2/125 | USFS
T6N R24E
NE 1/16 S21
LS 3848
1990 |
| 7. | FOUND 3 1/4" DIA. AL. CAP IN 5' DIA. ROCK MOUND ON 2 1/2"DIA. AL. PIPE.
CAP BEARS S61°22'22"W, 0.27' (N04°10'11"W, 0.35' PER RSMB 2/125) FROM
POSITION OF CORNER AS ORIGINALLY DETERMINED PER RSMB 1/98. MEASUREMENTS
SHOWN ARE TO THE ORIGNAL CORNER SET PER RSMB 1/98. MONUMENT NOT RESET. | INSCRIBED:
PER RSMB 2/125 | USFS
T6N R24E
N 1/16
S21 S22
LS 3848
1990 |
| 8. | FOUND 3 1/4" DIA. AL. CAP IN 4' DIA. ROCK MOUND ON 2 1/2"DIA. AL. PIPE.
CAP BEARS S87°58'26"W, 0.42' (WEST, 0.40' PER RSMB 2/125) FROM POSITION
OF CORNER AS ORIGINALLY DETERMINED PER PMB 1/66. MEASUREMENTS SHOWN
ARE TO ORIGNAL CORNER SET PER PMB 1/66. MONUMENT NOT RESET. | INSCRIBED:
PER RSMB 2/125 | USFS
T6N R24E
1/4
S21 S22
LS 3848 |

- | | | | |
|----|---|------------------------------|--|
| 5. | FOUND 3 1/4" DIA. AL. CAP IN 3.5' DIA. ROCK MOUND ON 2 1/2"DIA. AL. PIPE. CAP BEARS N34°18'28"W, 0.21' (N21°51'38"W r, 0.24' R PER RSMB 2/125) FROM POSITION OF CORNER AS ORIGINALLY DETERMINED PER PMB 1/66. MEASUREMENTS SHOWN ARE TO ORIGINAL CORNER SET PER PMB 1/66. MONUMENT NOT RESET. | INSCRIBED:
PER RSMB 2/125 | USFS
T6N R24E
E 1/16 S16
S21
LS 3848
1990 |
| 6. | FOUND 3 1/4" DIA. AL. CAP IN 3.5' DIA. ROCK MOUND ON 2 1/2"DIA. AL. PIPE. | INSCRIBED:
PER RSMB 2/125 | USFS
T6N R24E
NE 1/16 S21
LS 3848
1990 |
| 7. | FOUND 3 1/4" DIA. AL. CAP IN 5' DIA. ROCK MOUND ON 2 1/2"DIA. AL. PIPE. CAP BEARS S61°22'22"W, 0.27' (N04°10'11"W, 0.35' PER RSMB 2/125) FROM POSITION OF CORNER AS ORIGINALLY DETERMINED PER RSMB 1/98. MEASUREMENTS SHOWN ARE TO THE ORIGINAL CORNER SET PER RSMB 1/98. MONUMENT NOT RESET. | INSCRIBED:
PER RSMB 2/125 | USFS
T6N R24E
N 1/16
S21 S22
LS 3848
1990 |
| 8. | FOUND 3 1/4" DIA. AL. CAP IN 4' DIA. ROCK MOUND ON 2 1/2"DIA. AL. PIPE. CAP BEARS S87°58'26"W, 0.42' (WEST, 0.40' PER RSMB 2/125) FROM POSITION OF CORNER AS ORIGINALLY DETERMINED PER PMB 1/66. MEASUREMENTS SHOWN ARE TO ORIGINAL CORNER SET PER PMB 1/66. MONUMENT NOT RESET. | INSCRIBED:
PER RSMB 2/125 | USFS
T6N R24E
1/4
S21 S22
LS 3848 |

- | | | | |
|----|--|------------------------------|--|
| 6. | FOUND 3 1/4" DIA. AL. CAP IN 3.5' DIA. ROCK MOUND ON 2 1/2"DIA. AL. PIPE. | INSCRIBED:
PER RSMB 2/125 | USFS
T6N R24E
NE 1/16
LS 3848
1990 |
| 7. | FOUND 3 1/4" DIA. AL. CAP IN 5' DIA. ROCK MOUND ON 2 1/2"DIA. AL. PIPE.
CAP BEARS S61°22'22"W, 0.27' (N04°10'11"W, 0.35' PER RSMB 2/125) FROM
POSITION OF CORNER AS ORIGINALLY DETERMINED PER RSMB 1/98. MEASUREMENTS
SHOWN ARE TO THE ORIGINAL CORNER SET PER RSMB 1/98. MONUMENT NOT RESET. | INSCRIBED:
PER RSMB 2/125 | USFS
T6N R24E
N 1/16
S21 S22
LS 3848
1990 |
| 8. | FOUND 3 1/4" DIA. AL. CAP IN 4' DIA. ROCK MOUND ON 2 1/2"DIA. AL. PIPE.
CAP BEARS S87°58'26"W, 0.42' (WEST, 0.40' PER RSMB 2/125) FROM POSITION
OF CORNER AS ORIGINALLY DETERMINED PER PMB 1/66. MEASUREMENTS SHOWN
ARE TO ORIGINAL CORNER SET PER PMB 1/66. MONUMENT NOT RESET. | INSCRIBED:
PER RSMB 2/125 | USFS
T6N R24E
1/4
S21 S22
LS 3848 |

- | | | | |
|----|--|------------------------------|--|
| 7. | FOUND 3 1/4" DIA. AL. CAP IN 5' DIA. ROCK MOUND ON 2 1/2"DIA. AL. PIPE.
CAP BEARS S61°22'22"W, 0.27' (N04°10'11"W, 0.35' PER RSMB 2/125) FROM
POSITION OF CORNER AS ORIGINALLY DETERMINED PER RSMB 1/98. MEASUREMENTS
SHOWN ARE TO THE ORIGINAL CORNER SET PER RSMB 1/98. MONUMENT NOT RESET. | INSCRIBED:
PER RSMB 2/125 | USFS
T6N R24E
N 1/16
S21 S22
LS 3848
1990 |
| 8. | FOUND 3 1/4" DIA. AL. CAP IN 4' DIA. ROCK MOUND ON 2 1/2"DIA. AL. PIPE.
CAP BEARS S87°58'26"W, 0.42' (WEST, 0.40' PER RSMB 2/125) FROM POSITION
OF CORNER AS ORIGINALLY DETERMINED PER PMB 1/66. MEASUREMENTS SHOWN
ARE TO ORIGINAL CORNER SET PER PMB 1/66. MONUMENT NOT RESET. | INSCRIBED:
PER RSMB 2/125 | USFS
T6N R24E
1/4
S21 S22
LS 3848 |

8. FOUND 3 1/4" DIA. AL. CAP IN 4' DIA. ROCK MOUND ON 2 1/2" DIA. AL. PIPE. INSCRIBED: USFS
CAP BEARS S87°58'26"W, 0.42' (WEST, 0.40' PER RSMB 2/125) FROM POSITION PER RSMB 2/125 T6N R24E
OF CORNER AS ORIGINALLY DETERMINED PER PMB 1/66. MEASUREMENTS SHOWN 1/4
ARE TO ORIGINAL CORNER SET PER PMB 1/66. MONUMENT NOT RESET. S21[S22
S21[S22

FILENAME: M T2 EOD.DIR