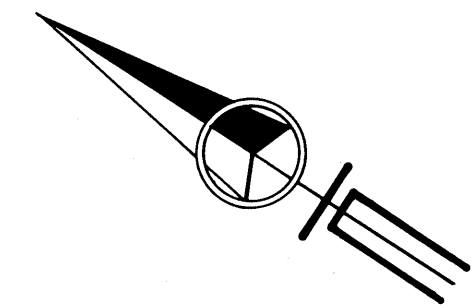


# PARCEL MAP 4329

CITY OF FREMONT  
ALAMEDA COUNTY CALIFORNIA  
SCALE: 1"=100' AUGUST 1984



**\* USE WITH CAUTION \***  
THIS IS A PUBLIC WORKS DEPARTMENT  
WORKING COPY OF AN OFFICIAL MAP  
ON FILE IN THE OFFICE OF THE COUNTY  
RECORDER, COUNTY OF ALAMEDA. OF-  
FICE INFORMATION OR CALCULATIONS  
MAY HAVE BEEN ADDED HEREON.

\*\* Fault Trace and Building Restriction Zone  
from Geologic and Seismic Hazards Investi-  
tation Report of the McIntyre Property by  
Earth Systems Consultants (File No.  
CO-0980-M1, October 24, 1980).

*Murray Levish, C.E.G.* 194

## NOTES AND LEGEND

The heavy broken line indicates the boundary of land subdivided by this map. The area within the heavy broken line is 9.701 acres. All distances and dimensions are shown in feet and decimals thereof.

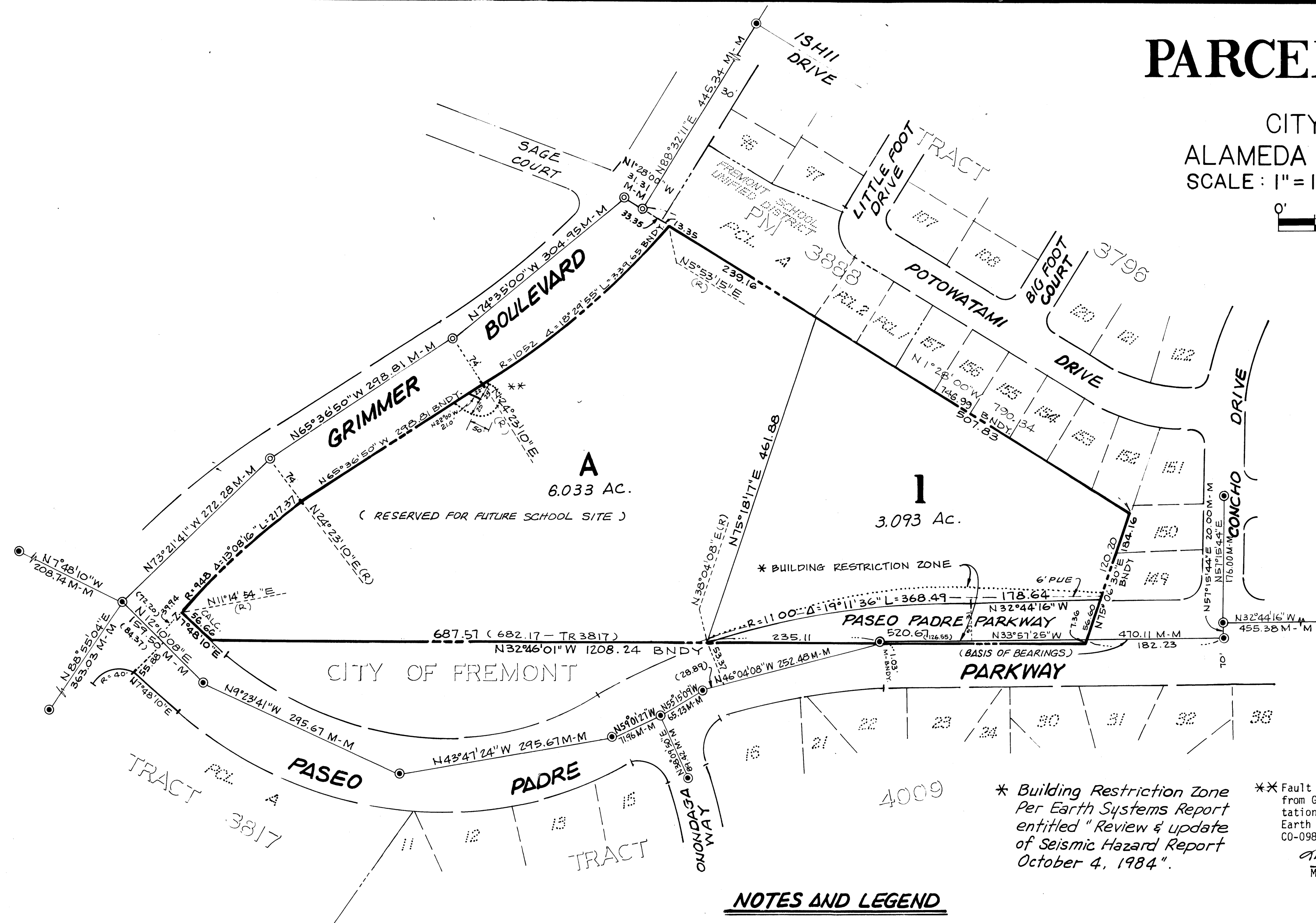
- Indicates Boundary Line.
- Indicates Parcel Line.
- Indicates a standard City Monument found.
- ⊙ Indicates a standard City Monument to be set.
- PUE Indicates Public Utility Easement.

## BASIS OF BEARINGS

The bearing N 33°57'25"W of the monument line of Paseo Padre Parkway, as shown on the map of Tract 4009, recorded in Book 106 of Maps at pages 63 thru. 68, Alameda County Records, was taken as the basis of bearings for this map.

## BUILDING SETBACK LINES

To be per City of Fremont Zoning Ordinance.



**MacKay & Somps**  
CIVIL ENGINEERS  
2610 CENTRAL AVENUE  
UNION CITY CALIFORNIA

filed 12-6-84

149/44

77/67/149/44

MAP BK 149 PG 44