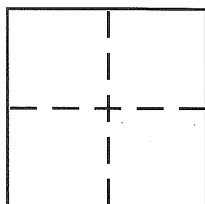


CORNER RECORD

Document Number CR 2451
 City of UNINCORPORATED COUNTY County of ALAMEDA, California

Brief Legal Description GREENVIEW DRIVE LINE MONUMENT APPROXIMATELY 50' EAST OF HOFFMAN WAY



CORNER TYPE

Government Corner ☐ Control ☒
 Meander ☐ Property ☐
 Rancho ☐ Other ☐
 Date of Survey 07-22-05

COORDINATES (Optional)

N. _____
 E. _____
 Zone _____ NAD27 ☐ NAD83 ☐
 NAD83 Epoch _____
 Elev. _____
 Vert. Datum: NGVD29 ☐ NAVD88 ☐
 Meas. Units: Metric ☐ Imperial ☐

Corner - Left as found ☐ Found and tagged ☐ Established ☐ Reestablished ☒ Rebuilt ☐

Identification and type of corner found: Evidence used to identify or procedure used to establish or reestablish the corner:
RE-ESTABLISHED STANDARD MONUMENT BOX ON GREENVIEW DRIVE APPROXIMATELY 50' EAST OF HOFFMAN WAY AS SHOWN ON TRACT 1377 EDEN TOWNSHIP ALAMEDA CO. CALIFORNIA SET 2 FT. SWING TIES IN ASPHALT ROADWAY USING PK NAILS. SEE DRAWING ON BACK PAGE.

A description of the physical condition of the monument as found and as set or reset: MONUMENT WAS FOUND WITH CENTER PIN BROKEN BY REPAVING OF GREENVIEW DRIVE AND RESET USING STANDARD MONUMENT BOX WITH BRASS DISK WITH PUNCH MARK AND STAMPED R.C.E. 32158.

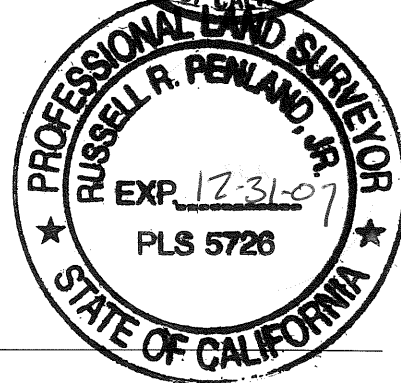
SURVEYOR'S STATEMENT

This Corner Record was prepared by me or under my direction in conformance with the Land Surveyor's Act on Aug. 16 2005
 Signed Dan R. Schack P.L.S or R.C.E. No. 32158

COUNTY SURVEYOR'S STATEMENT

This Corner Record was received 8-26-05
 and examined and filed 3-22-07
 Signed Russell R. Penland, Jr. P.L.S or R.C.E. No. 5126
 Title COUNTY SURVEYOR

County Surveyor's Comment _____

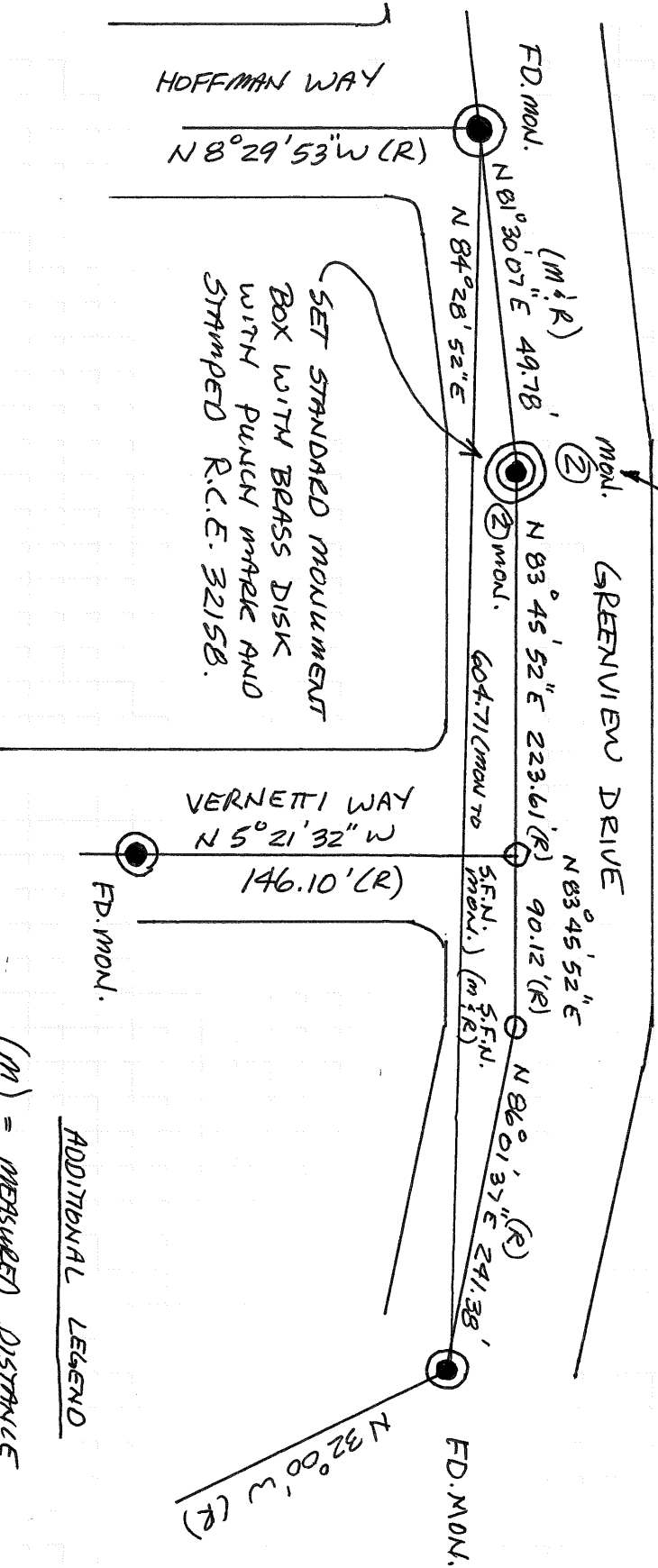


TRACT 1377 EDEN TOWNSHIP ALAMEDA CO.

LEGEND

- = STD. MONUMENT FOUND. (TR 1377)
- ⊙ = STD MONUMENT RESET.
- = STD MONUMENT NOT FOUND.

NORTH
N.T.S.



ADDITIONAL LEGEND

- (M) = MEASURED DISTANCE
- (R) = PER RECORD