

CORNER RECORD

Agency Index

BOOK 107 PAGE 26

Document Number

CR 11064

City of BERKELEYCounty of ALAMEDA, California

Brief Legal Description

CITY OF BERKELEY (C.O.B.) MONUMENT B0241 NEAR THE INTERSECTION OF WARD STREET AND MABEL STREET.

RANCHO
SAN
ANTONIO
(V & D PERALTA)

CORNER TYPE

Government Corner ☐ Control
Meander ☐ Property
Rancho ☐ Other

Date of Survey 2/27/2018**COORDINATES (Optional)**

N. 2139550.6 ± E. 6046488.8 ±
☒ Elevation 58.62' (C.O.B. DATUM)
Units Metric ☐ U.S. Survey Foot ☒
Horizontal Datum CCS 83
Zone 3 Epoch Date _____
Vertical Datum _____

☐ Complies with Public Resources Code §§8801-8819
☐ Complies with Public Resources Code §§8890-8902

PLS Act Ref: ☐ 8765(d) ☒ 8771 ☐ 8773 ☐ Other:

Corner/
Monument: ☒ Left as found ☐ Established ☐ Rebuilt ☒ Pre-Construction
☐ Found and tagged ☐ Reestablished ☒ Referenced ☐ Post-Construction

Narrative of corner identified and monument as found, set, reset, replaced, or removed:

☒ See sheet #2 for description(s):

FOUND MONUMENT THAT COULD BE DAMAGED OR DESTROYED BY A PROPOSED GAS LINE CONSTRUCTION PROJECT. MONUMENT WAS REFERENCED AS SHOWN ON PAGE 2 OF 2.

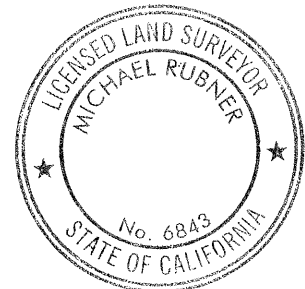
THE PURPOSE OF THIS CORNER RECORD IS TO PRESERVE THE LOCATION OF THE MONUMENT PRIOR TO CONSTRUCTION. NO ATTEMPT WAS MADE TO DETERMINE THE RELATIONSHIP BETWEEN THE MONUMENT AND PROPERTY LINES, RIGHT-OF-WAY LINES, CENTERLINES OR OTHER MONUMENTS.

NOTE:

MONUMENT AT MABEL STREET AND DERBY STREET WAS SEARCHED FOR AND NOT FOUND. THERE IS A MAGNETIC SIGNAL BELOW THE CONCRETE FINISHED SURFACE AT THE RECORD POSITION OF THE MONUMENT.

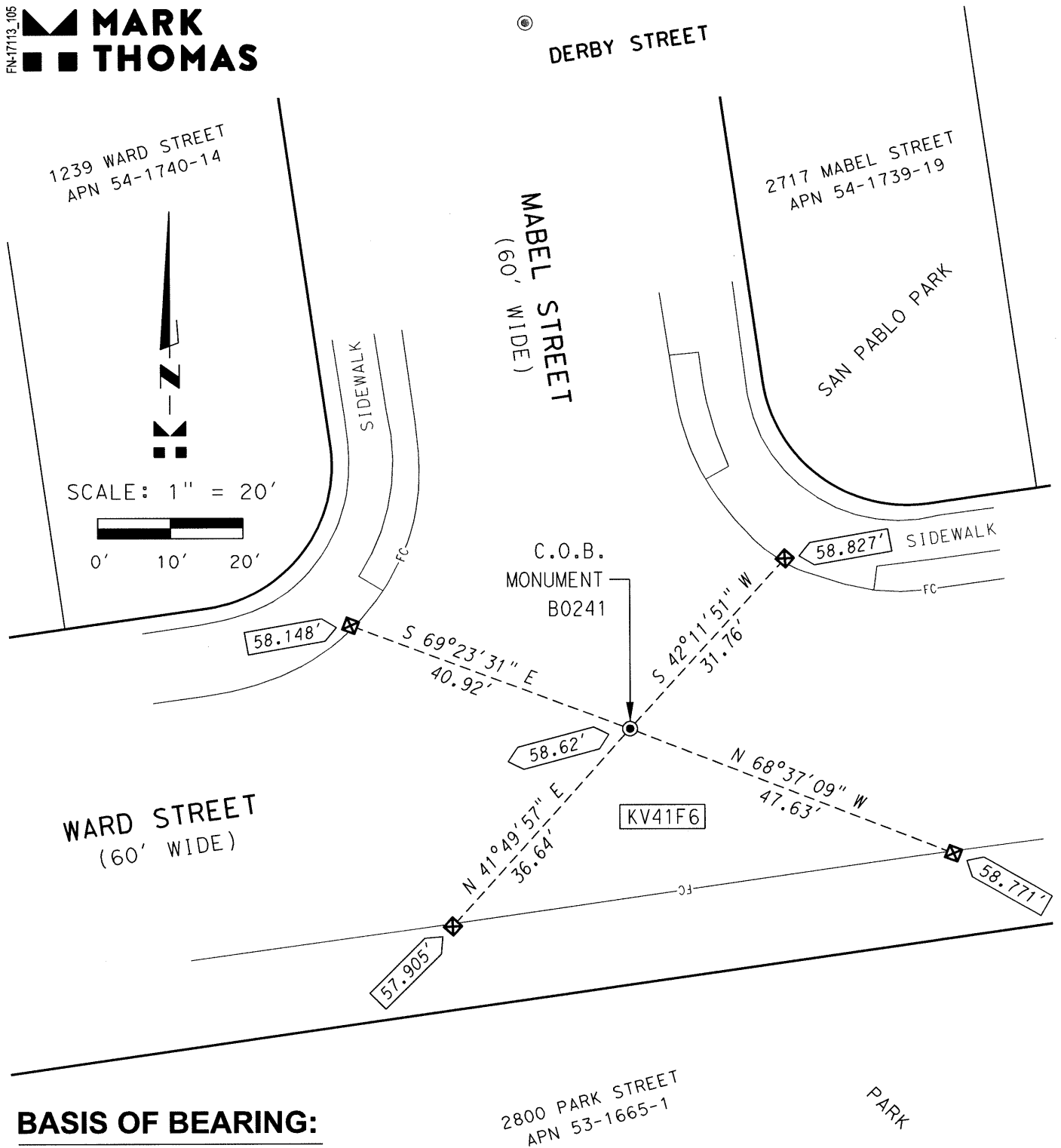
SURVEYOR'S STATEMENT

This Corner Record was prepared by me or under my direction in conformance with the Professional Land Surveyors' Act on APRIL 24, 2018

Signed [Signature] P.L.S. or R.C.E. No. 8911**COUNTY SURVEYOR'S STATEMENT**This Corner Record was received 28 FEBRUARY 2018and examined and filed 27 APRIL 2018Signed Michael Rubner P.L.S. or R.C.E. No. 6843Title COUNTY SURVEYOR

County Surveyor's Comment _____

FN-1713_105


**MARK
THOMAS**
**BASIS OF BEARING:**

BEARING BASIS IS ASSUMED

LEGEND:

- FOUND CONCRETE MONUMENT WITH 1/4" PIN IN WELL
- ⊠ SET CUT CROSS FOR REFERENCE POINT IN TOP OF CONCRETE CURB
- ⊙ MONUMENT SEARCHED FOR AND NOT FOUND (MAGNETIC SIGNAL BELOW CONCRETE SURFACE)
- 58.62' MONUMENT ELEVATION (CITY OF BERKELEY DATUM)
- XX.XXX' REFERENCE POINT ELEVATION (ESTABLISHED USING A DIGITAL LEVEL)
- KV41F6 ALAMEDA COUNTY MONUMENT IDENTIFICATION NUMBER