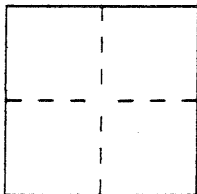


CORNER RECORD

BK 26 P 38
Document Number CR 3014
City of PIEDMONT County of ALAMEDA, California

Brief Legal Description LINE BETWEEN LOTS 16 & 18 26 M 73



CORNER TYPE

Government Corner ☐ Control ☐
Meander ☐ Property ☒
Rancho ☐ Other ☐
Date of Survey 4/17/07

COORDINATES (Optional)

N. _____
E. _____
Zone _____ Datum _____
Elev. _____

Corner — Left as found ☐ Found and tagged ☐ Established ☒ Reestablished ☐ Rebuilt ☐

Identification and type of corner found: Evidence used to identify or procedure used to establish or reestablish the corner: NOTHING FOUND. ESTABLISHED PROPERTY CORNER FROM FOUND CHISELED CROSSES ON CRAIG AVE.

A description of the physical condition of the monument as found and as set or reset: FOUND CROSSES IN GOOD CONDITION. SET NAIL & BRASS TAG AT ~~THE~~ PROPERTY CORNER, AND 3/4" IRON PIPE WITH PLASTIC CAP ON PROPERTY LINE.

SURVEYOR'S STATEMENT

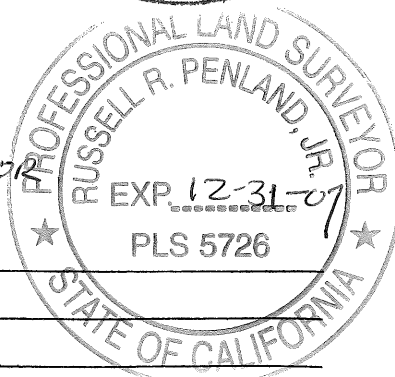
This Corner Record was prepared by me or under my direction in conformance with the Land Surveyors' Act on MAY 15 2007
Signed Paul O. Webb L.S. or R.C.E. Number LS 5530



COUNTY SURVEYOR'S STATEMENT

This Corner Record was received 5-17-2007 and examined and filed 6-11-2007.

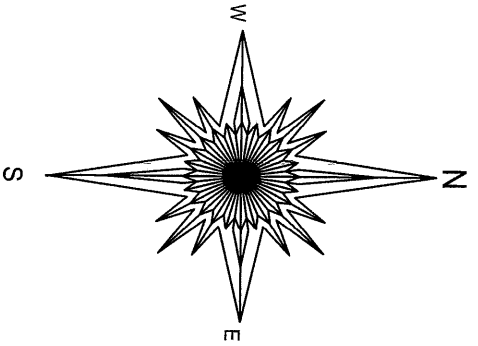
Signed Russell R. Penland, Jr. Title County Surveyor



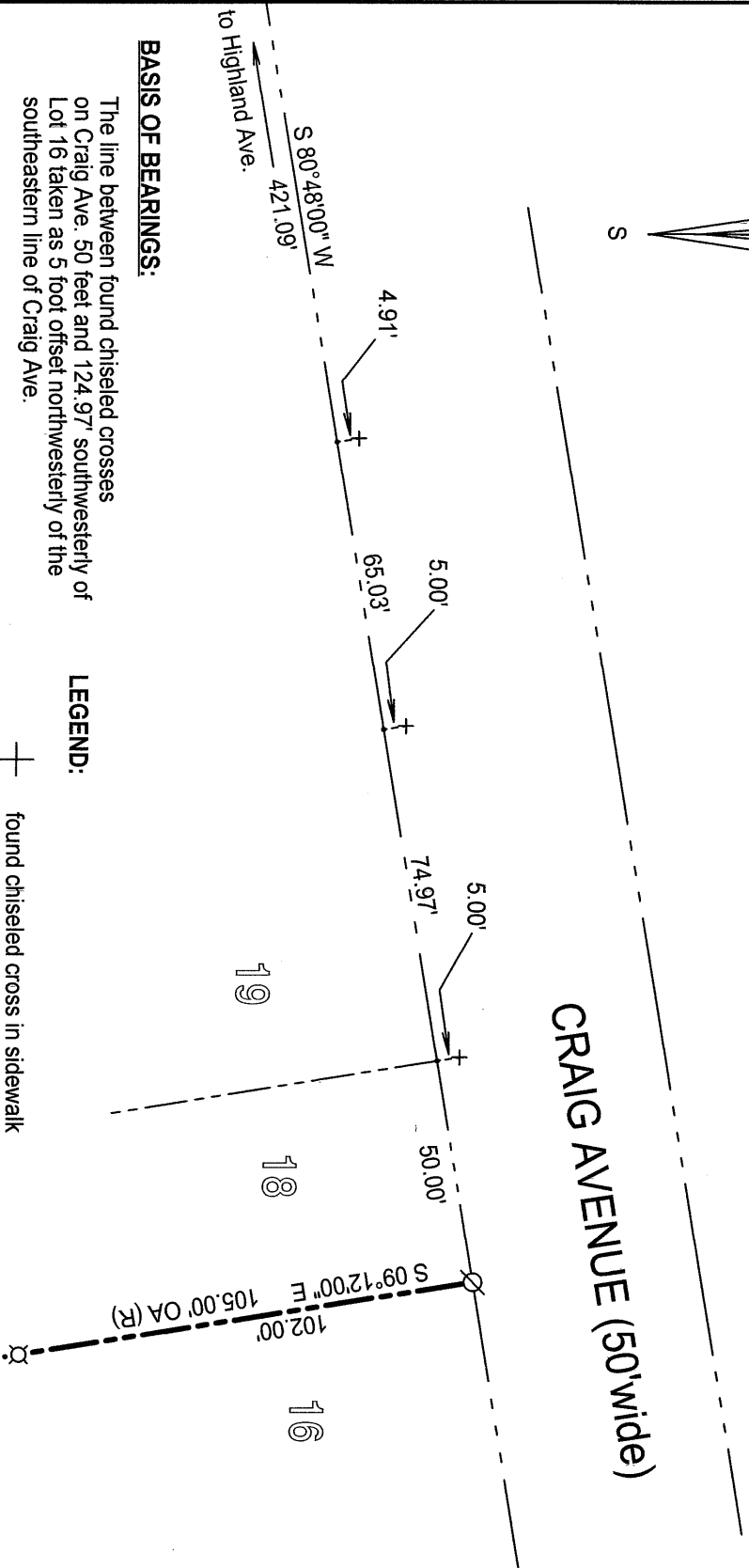
County Surveyor's Comment _____

THE LINE BETWEEN LOTS 16 AND 18, MAP OF "CRAIG PROPERTY"
FILED MARCH 8, ~~2007~~ IN BOOK 26 OF MAPS, PAGE 73 ALAMEDA COUNTY RECORDS
¹⁹¹²
TOWN OF PIEDMONT, COUNTY OF ALAMEDA, STATE OF CALIFORNIA

APRIL, 2007



CRAIG AVENUE (50'wide)



BASIS OF BEARINGS:

The line between found chiseled crosses on Craig Ave. 50 feet and 124.97' southwesterly of Lot 16 taken as 5 foot offset northwesterly of the southeastern line of Craig Ave.

LEGEND:

✚ found chiseled cross in sidewalk

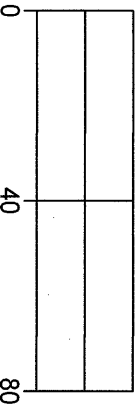
⊗ set nail and brass tag LS 5530 in concrete driveway

⊗ set 3/4" iron pipe with plastic cap LS 5530

OA overall

R record per 26 M 73

SCALE: 1 INCH = 40 FEET



Paul O. Webb-Licensed Surveyor
 2724 Ninth Street, Suite B
 Berkeley, Ca. 94710

job# 070416 May 15, 2007