

FAR WESTERLY  
CHANNELS AND  
BRANCHES 10%

CITY OF LOS ANGELES  
LAND

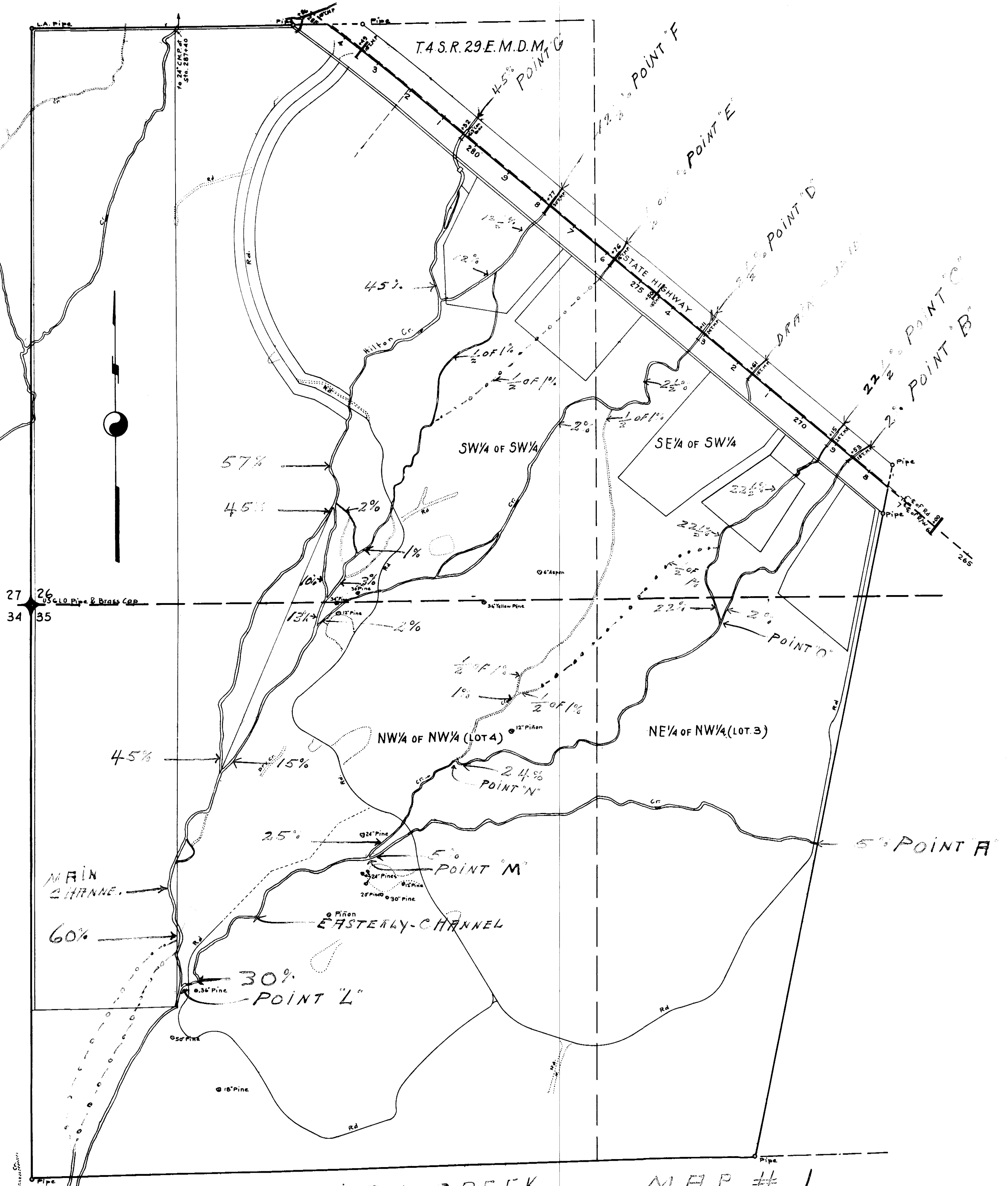
U.S. FOREST  
LAND

WESTERLY  
CHANNEL

10%

No. 64  
Filed for Record this 18th day of August  
1960 at the Request of Jerome Watterson

Geo. Delaney  
County Recorder



# RE: HILTON CREEK WATER DISTRIBUTION

Affidavit of Jerome Watterson Recorded  
Aug. 18, 1960 Vol. 48 Official Records Mono Co.  
Page 213

MAP # 1  
SHOWING STREAM  
FLOWS 1939-1947.  
REFER ALSO TO  
AFFIDAVIT BY  
JEROME WATTERSON  
RECORDED CONDUIT ENTER  
HEREWITH 2/16/60  
FILE # 2

Page 42