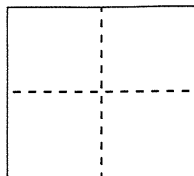


CORNER RECORDDocument Number **CR 8599**City of Berkeley (APN 55-1862-23-3)County of Alameda, CaliforniaBrief Legal Description Monument near 299 Panoramic Way**CORNER TYPE**

Government Corner ☐ Control ☒
 Meander ☐ Property ☐
 Rancho ☐ Other ☐

Date of Survey July 21, 2016**COORDINATES (Optional)**

N. _____
 E. _____
 Zone _____ NAD27 ☐ NAD83 ☐
 NAD83 Epoch _____
 Elev. _____
 Vert. Datum: NGVD29 ☐ NAVD88 ☐
 Meas. Units: Metric ☐ Imperial ☐

Pre-construction (waterline) Corner Record

Corner - Left as found ☒ Found and tagged ☐ Established ☐ Reestablished ☐ Rebuilt ☐

Identification and type of corner found: Evidence used to identify or procedure used to establish or reestablish the corner:

Found monument that could be damaged or destroyed by planned water line construction project.

Monument was referenced as shown on page 2. The purpose of this Corner Record is to preserve possible evidence only; no attempt was made to determine the relationship to property, centerline, or right of way lines.

A description of the physical condition of the monument as found and as set or reset:

Monument was found in good condition and was referenced with one found and two set reference points as shown on Page 2.

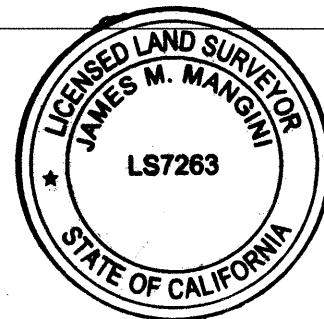
Reference EBMUD Field Book 4487, Page 69 (Poulsen/Chou)

SURVEYOR'S STATEMENT

This Corner Record was prepared by me or under my direction in conformance with the Professional Land Surveyor's Act on AUGUST 23, 2016

Signed

P.L.S. or R.C.E. No.

7263**COUNTY SURVEYOR'S STATEMENT**

This Corner Record was received

27 JULY, 2016

and examined and filed

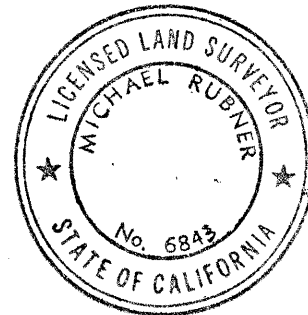
29 AUGUST, 2016

Signed

P.L.S. or R.C.E. No.

6843

Title

COUNTY SURVEYOR

County Surveyor's Comment:

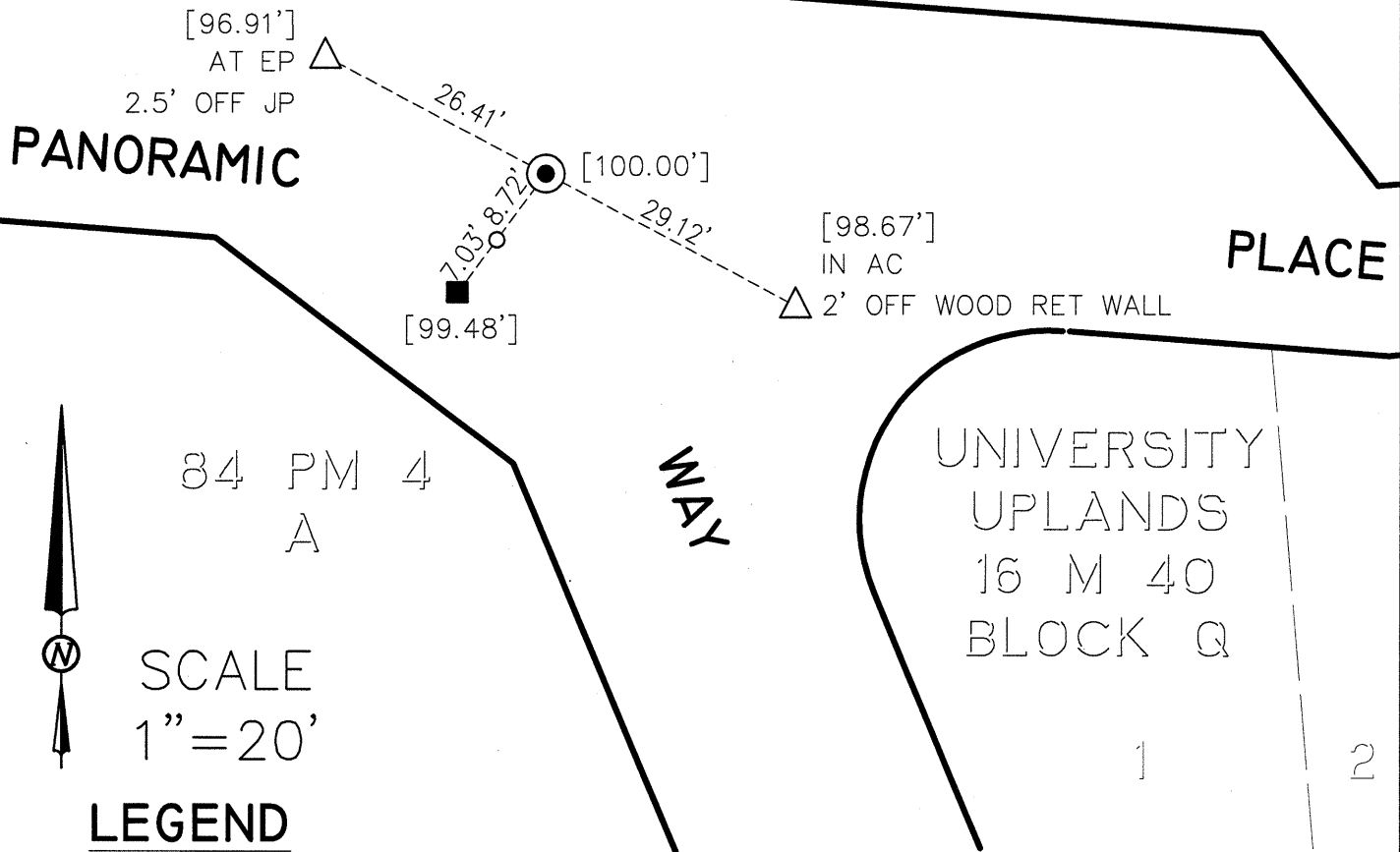
BERKELEY

ALAMEDA COUNTY

UNIVERSITY HILL
25 M 71

UNIVERSITY
OF
CALIFORNIA
9 RS 92

299 PANORAMIC WAY
APN 55-1862-23-3



FOUND 1/2" REBAR WITH YELLOW CAP STAMPED "CBK", INSIDE A DAMAGED 2" IRON PIPE, FLUSH WITH AC AT CORNER OF D/W TO HOUSE #299, CITY OF BERKELEY CONTROL POINT

FOUND 1" BRASS PLUG IN CONCRETE CURB, STAMPED "LS 4520" PAINTED "B2254"

SET 5/8" REBAR AND 1" ALUMINUM CAP, PUNCHED AND STAMPED "EBMUD MON RP"

SET PUNCH MARK IN RIM OF SEWER MANHOLE ON LINE

[] ASSUMED ELEVATION (MEASURED USING A LEICA DNA10 DIGITAL LEVEL)



ADDRESS: 299 PANORAMIC WAY
APN: 55-1862-23-3

CR# 8599

CR