

# CORNER RECORD

Agency Index

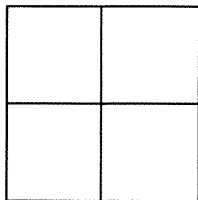
BK 98 PG 44

Document Number

CR 10135City of BERKELEYCounty of ALAMEDA, CaliforniaBrief Legal Description PIN MONUMENT LOCATED WITHIN THE INTERSECTION OF SONOMA AVENUE AND FRESNO AVENUE

## CORNER TYPE

## COORDINATES (Optional)



Government Corner ☐ Control ☒  
Meander ☐ Property ☐  
Rancho ☐ Other ☐

N. \_\_\_\_\_ E. \_\_\_\_\_

Elevation 187.30Units Metric ☐ U.S. Survey Foot ☒

Horizontal Datum \_\_\_\_\_

Zone \_\_\_\_\_ Epoch Date \_\_\_\_\_

Vertical Datum CITY OF BERKELEY☐ Complies with Public Resources Code §§8801-8819☐ Complies with Public Resources Code §§8890-8902PLS Act Ref: ☐ 8765(d)☒ 8771☐ 8773☐ Other: \_\_\_\_\_Corner/  
Monument: ☒ Left as found☐ Established☐ Rebuilt☒ Pre-Construction☐ Found and tagged☐ Reestablished☐ Referenced☐ Post-Construction

Narrative of corner identified and monument as found, set, reset, replaced, or removed:

☒ See sheet #2 for description(s) :

FOUND 3/8" IRON PIN IN CONCRETE IN MONUMENT WELL. CITY ID B1684

FOUND AND SET POINTS AS SHOWN ON PAGE 2.

THIS POINT WAS REFERENCED PRIOR TO A CONSTRUCTION PROJECT IN THE VICINITY.

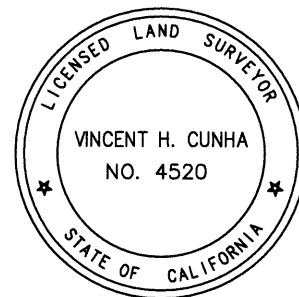
THE TIES SHOWN HEREON ARE FOR THE PURPOSE OF PERPETUATING FOUND MONUMENTATION.  
NO CLAIM IS MADE AS TO THE RELATIONSHIP OF THE POINTS OR LINES SHOWN HEREON TO TRUE  
BOUNDARY LOCATION.

## SURVEYOR'S STATEMENT

This Corner Record was prepared by me or under my direction in conformance with

the Professional Land Surveyors' Act on MAY 19, 2017.Signed Vincent H. Cunha P.L.S. No. LS 4520

VINCENT H. CUNHA



## COUNTY SURVEYOR'S STATEMENT

This Corner Record was received 1 JUNE, 2017and examined and filed 11 AUGUST, 2017.Signed Michael Rubner P.L.S. or R.C.E. No. 6843Title COUNTY SURVEYOR

County Surveyor's Comment

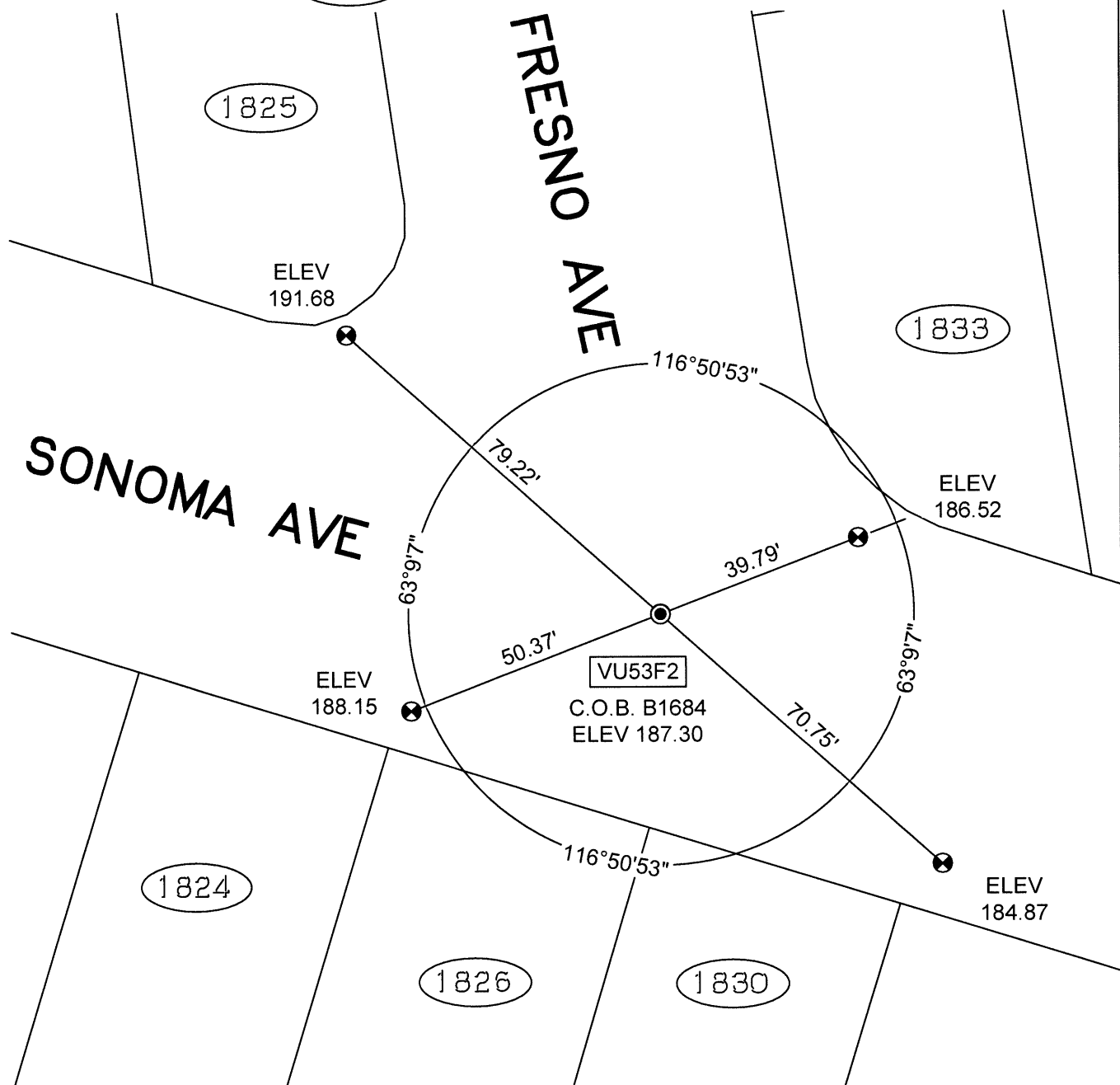


SCALE: 1"=30'

## LEGEND

- FOUND IRON PIN IN CONCRETE IN MONUMENT WELL
- ⊗ SET CUT CROSS IN WALK
- ✕ SET CUT CROSS IN CURB
- ✕ SET MAG AND SHINER
- SET REBAR & CAP STAMPED "CEI RP"
- AA##A# ALAMEDA COUNTY MONUMENT ID

19592 REFERENCE STREET ADDRESS



NOTE:  
ELEVATIONS SHOWN HEREON ARE BASED UPON  
CITY OF BERKELEY (C.O.B.) VERTICAL DATUM.

216010-M-SONOMA-CR5