

4055 International Plaza Suite 100  
Fort Worth, Texas 76109

**STRICKLAND AND BROTHERS**  
4445 NELSON BROGDON  
BUFORD, GA

**Revisions:**

File Name: 22236 - A1.3  
Project No: 22236  
Date: 02/10/23  
Drawn By: RCA  
Checked By: TI

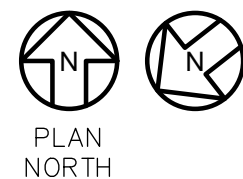
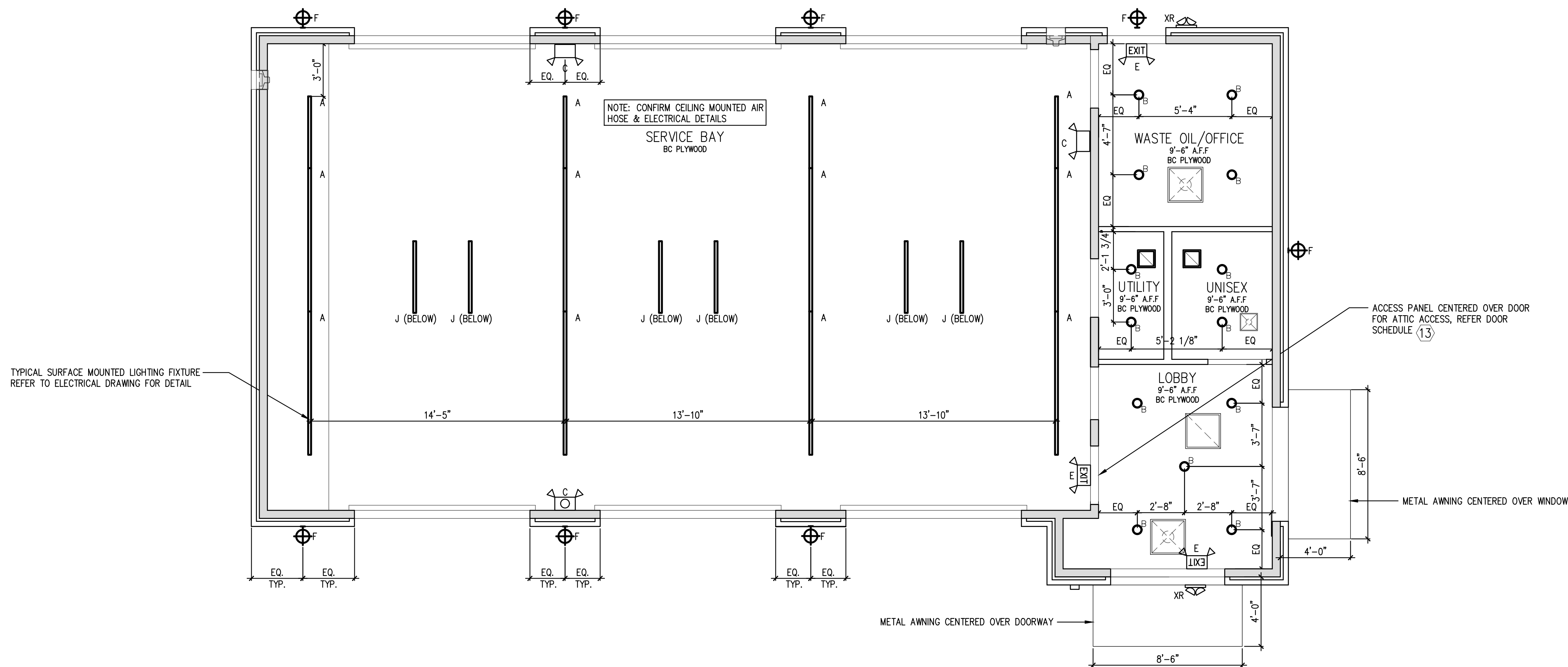
SHEET

## A1.3

REFLECTED  
CEILING PLAN

1. GENERAL CONTRACTOR SHALL NOTIFY ARCHITECT OF ANY PROBLEMS WITH CEILING HEIGHTS OR LIGHT FIXTURES BEFORE FINISH CEILINGS ARE INSTALLED. IF THE CONTRACTOR FAILS TO DO SO, HE SHALL BE RESPONSIBLE FOR TAKING DOWN THE CEILING & LIGHT FIXTURES AND REINSTALLING THEM IN A CONFIGURATION ACCEPTABLE TO THE ARCHITECT AT NO ADDITIONAL COST.
2. COORDINATE WORK WITH OTHER TRADES HAVING WORK IN THE CEILING INCLUDING, BUT NOT LIMITED TO: TELEPHONE, SECURITY, CABLE COMPANIES WHEREVER THEIR RESPECTIVE WORK IS CONTIGUOUS.
3. PROVIDE CUTOUT AND OTHER SPECIAL PROVISIONS IN BC PLYWOOD WORK AS REQUIRED FOR LIGHTING FIXTURES, REGISTERS, DIFFUSERS, AND OTHER INSERTED ITEMS.
4. ALL MATERIALS SHALL HAVE CLASS 1 FLAME SPREAD RATING AND BE INSTALLED IN ACCORDANCE WITH MANUFACTURER'S WRITTEN SPECIFICATIONS AND CODES.
5. ALL JOINTS IN THE BC PLYWOOD SHALL BE SQUARE, LEVEL AND ALIGNED WITH EACH OTHER.
6. SEE ENGINEER'S DRAWINGS FOR LIGHTING AND MECHANICAL LAYOUTS. CONTRACTOR SHALL NOTIFY ARCHITECT IMMEDIATELY OF ANY DISCREPANCIES NOTED BETWEEN ARCHITECTURAL AND ENGINEERING DRAWINGS OR BETWEEN ENGINEERING DISCIPLINES. G.C. TO COORDINATE ALL DUCT DAMPERS TO BE REACH FROM ACCESSIBLE CEILINGS.
7. RECESSED CEILING SPEAKERS TO BE INSTALLED BY OWNERS VENDOR. GC COORDINATE.
8. REFER ROOM FINISH SCHEDULE ON A2.5 FOR ADDITIONAL INFORMATION.

LIGHTING LEGEND	
A	LED STRIPLIGHT FIXTURE LITHONIA LIGHTING: ZLIN ~ 48" 5000LM 40K LITHONIA LIGHTING: ZLIN ~ 96" 10000LM 40K
B	6" LED DOWN LIGHT MODEL: LITHONIA LIGHTING LDN6 OPEN, RECESSED, WHITE
C	EMERGENCY EXIT LIGHT, INDOOR/OUTDOOR ~2.78W HUBBELL ~ SERIES PC FINISH WHITE 120VAC WALL MOUNTED LIGHTING & BATTERY BACKUP. CONFIRM MOUNTING HEIGHT ON SITE.
E	EXIT SIGN ~ 3.8W LITHONIA ~ ECBG LED M6 WITH BATTERY BACKUP. CONFIRM MOUNTING HEIGHT ON SITE. CENTER ABOVE OPENING U.N.O.
F	OUTDOOR LED WALLPACK WET SAFETY RATED ~ 0.78W ~ 3000K WLS LIGHTING: WLS-LMWG-1-N-8-T3-C MOUNTING HEIGHT SHALL BE 11'-5 1/2" A.F.F.
J	LED LINEAR VAPOR LIGHT FIXTURE, SHATTER PROOF LIGHTIDE LED L48 5000LM 40K
XR	LITHONIA: ELMRW REMOTE EMERGENCY EGRESS LIGHT FIXTURE



**1 REFLECTED CEILING PLAN**  
SCALE: 1/4" = 1'-0"

SCALE: 1/4" = 1'-0"

COPYRIGHT © 2023