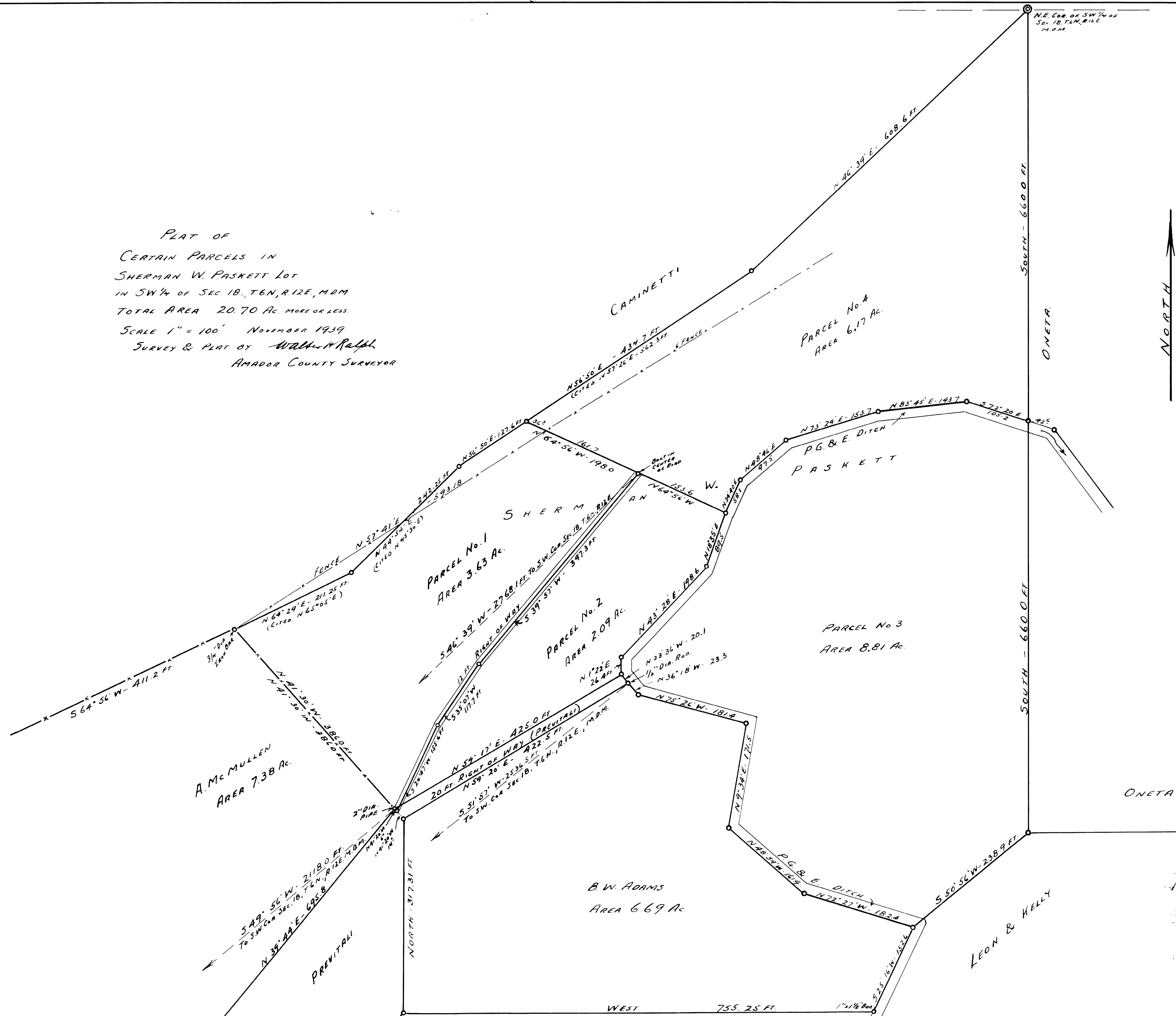


PLAT OF  
CERTAIN PARCELS IN  
SHERMAN W. PASKETT LOT  
IN SW 1/4 OF SEC. 18, T.6N, R.12E, M.D.M.  
TOTAL AREA 20.70 AC. MORE OR LESS.  
SCALE 1" = 100' NOVEMBER 1939  
SURVEY & PLAT BY *Walter W. Ralph*  
AMADOR COUNTY SURVEYOR



32