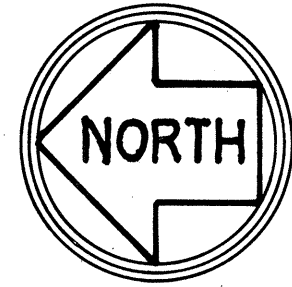


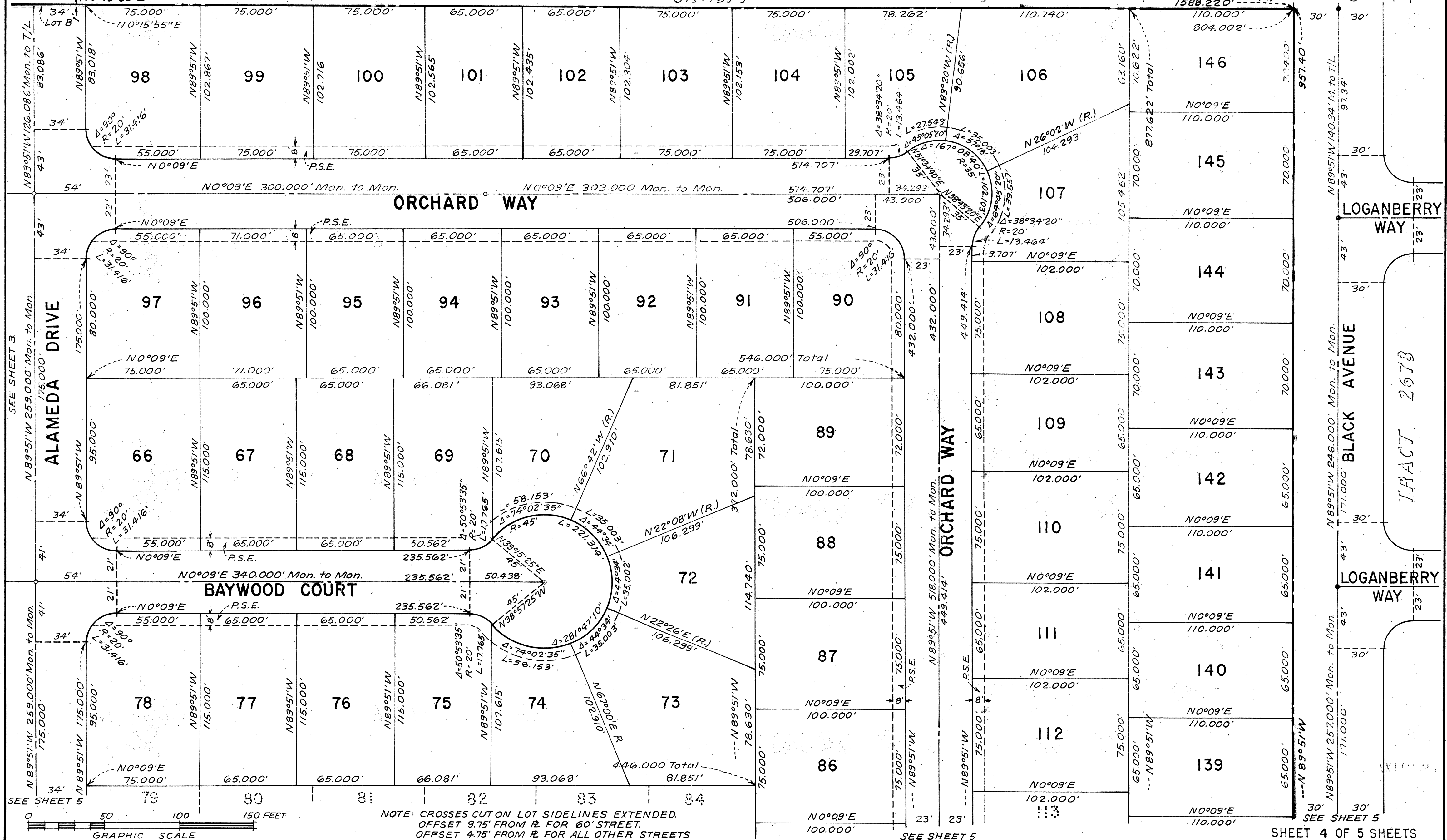
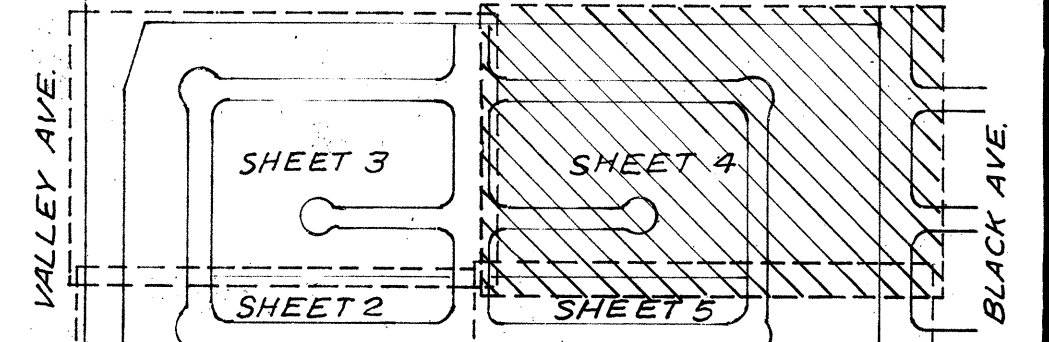
BASIS OF BEARINGS:
CENTER LINE OF BLACK AVENUE WAS TAKEN AS N89°51'W
BUILDING SET-BACK LINES:
BUILDING SET-BACK LINES TO BE AS REQUIRED BY THE CITY
OF PLEASANTON ZONING ORDINANCE.
LEGEND:
STANDARD CONCRETE CITY MONUMENTS TO BE
INSTALLED SHOWN THUS: ---
EXISTING MONUMENTS SHOWN THUS: ---
PUBLIC SERVICE EASEMENTS DESIGNATED "P.S.E."



TRACT 2721
PLEASANTON VALLEY - UNIT 5
CITY OF PLEASANTON
ALAMEDA COUNTY, CALIFORNIA

MARTIN & BISSELL
CIVIL ENGINEERS
JUNE 1965
SCALE: 1" = 40'

KEY MAP
No Scale



TR
2721