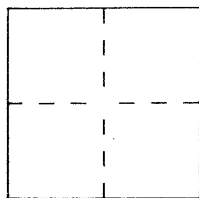


CORNER RECORD

Document Number CR1017
County of ALAMEDA, CaliforniaCity of BERKELEY

Brief Legal Description _____



CORNER TYPE

Government Corner ☐ Control ☐
 Meander ☐ Property ☒
 Rancho ☐ Other ☐
 Date of Survey _____

COORDINATES
(Optional)

N. _____
 E. _____
 Zone _____ Datum _____
 Elev. _____

Corner — Left as found ☒ Found and tagged ☐ Established ☒ Reestablished ☐ Rebuilt ☐

Identification and type of corner found: Evidence used to identify or procedure used to establish or reestablish the corner:

FOUND EXISTING CONCRETE MONUMENT WITH
PIN IN CASE AS SHOWN ON SKETCH.

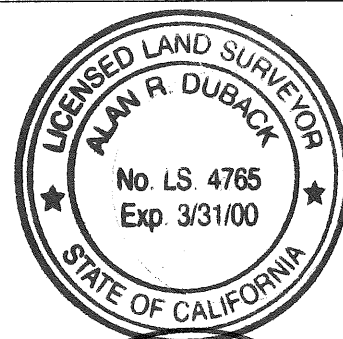
A description of the physical condition of the monument as found and as set or reset: _____

FOUND EXISTING CONCRETE MONUMENT WITH
PIN IN CASE AS SHOWN ON SKETCH.

SURVEYOR'S STATEMENT

This Corner Record was prepared by me or under my direction in conformance with
 the Land Surveyors' Act on JULY 17 19 98.

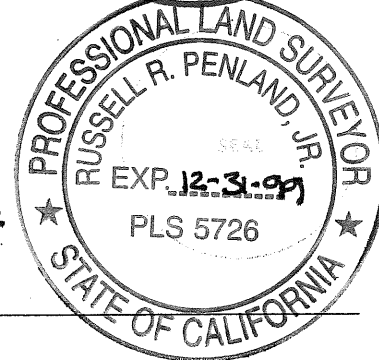
Signed [Signature] L.S. or R.C.E. Number LS 4765



COUNTY SURVEYOR'S STATEMENT

This Corner Record was received 4-30- 19 98 and examined
 and filed 9-28- 19 98

Signed Russell R. Penland, Jr. Title Deputy County Surveyor



County Surveyor's Comment _____

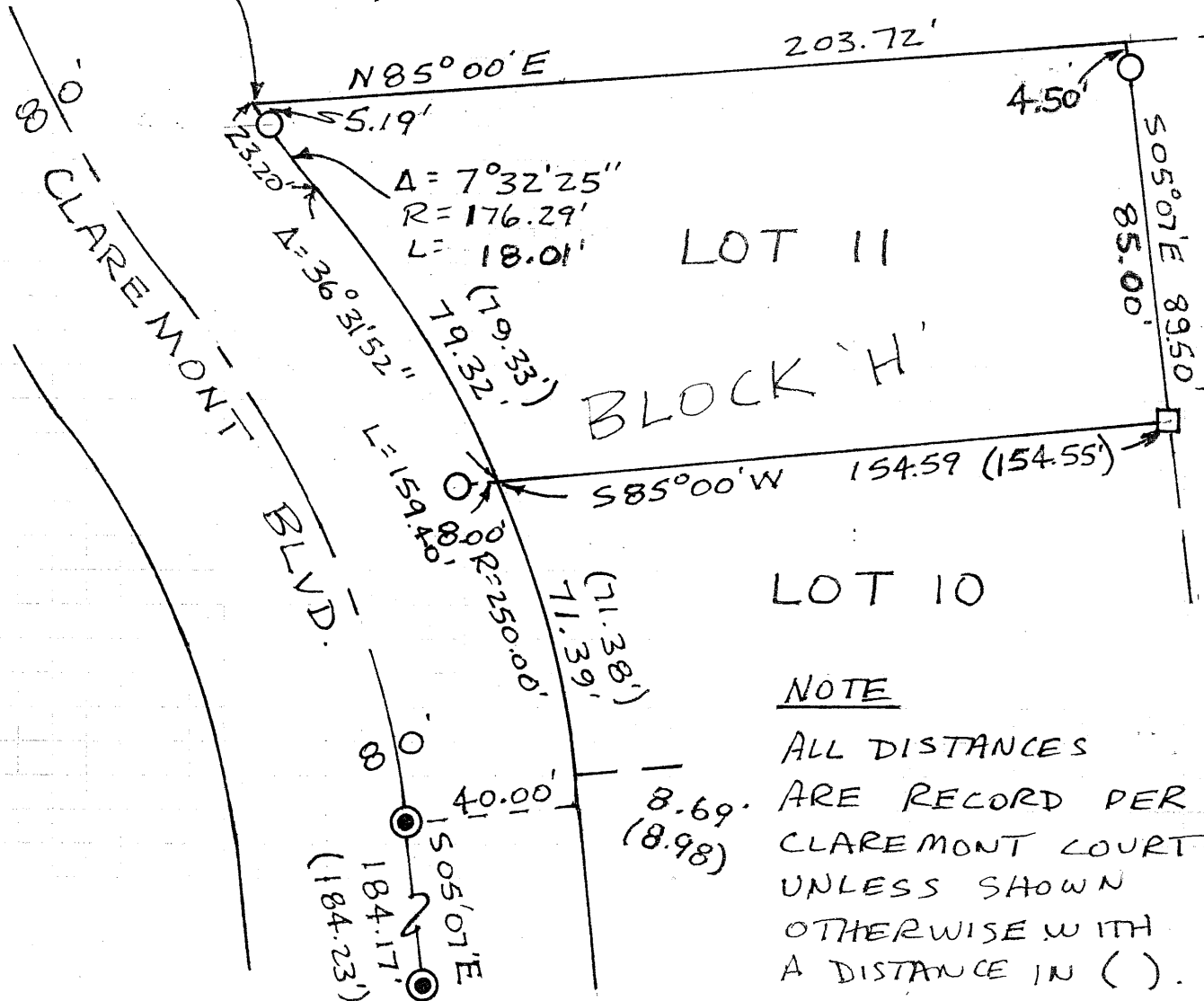
4
N
N.T.S.

- = FOUND CONCRETE MONUMENT WITH PIN IN CASE
- = SET LEAD AND DISK STAMPED "LS4765".
- = SET 3/4" I.P. WITH PLASTIC PLUG "LS4765"
- [] = RECORD PER TANGLEWOOD ROAD OPENING (BK 14, OF MAPS, PG. 25)
- () = RECORD PER CLAREMONT COURT (BK 22 PG 78)

$$\begin{aligned} \Delta &= 28^{\circ} 59' 27'' \\ R &= [176.29] \\ L &= [89.20] \end{aligned}$$

LOT 1 | LOT 10
"TANGLEWOOD ROAD OPENING"

GARBER 40 STREET



NOTE

ALL DISTANCES
ARE RECORD PER
CLAREMONT COURT
UNLESS SHOWN
OTHERWISE WITH
A DISTANCE IN ().