

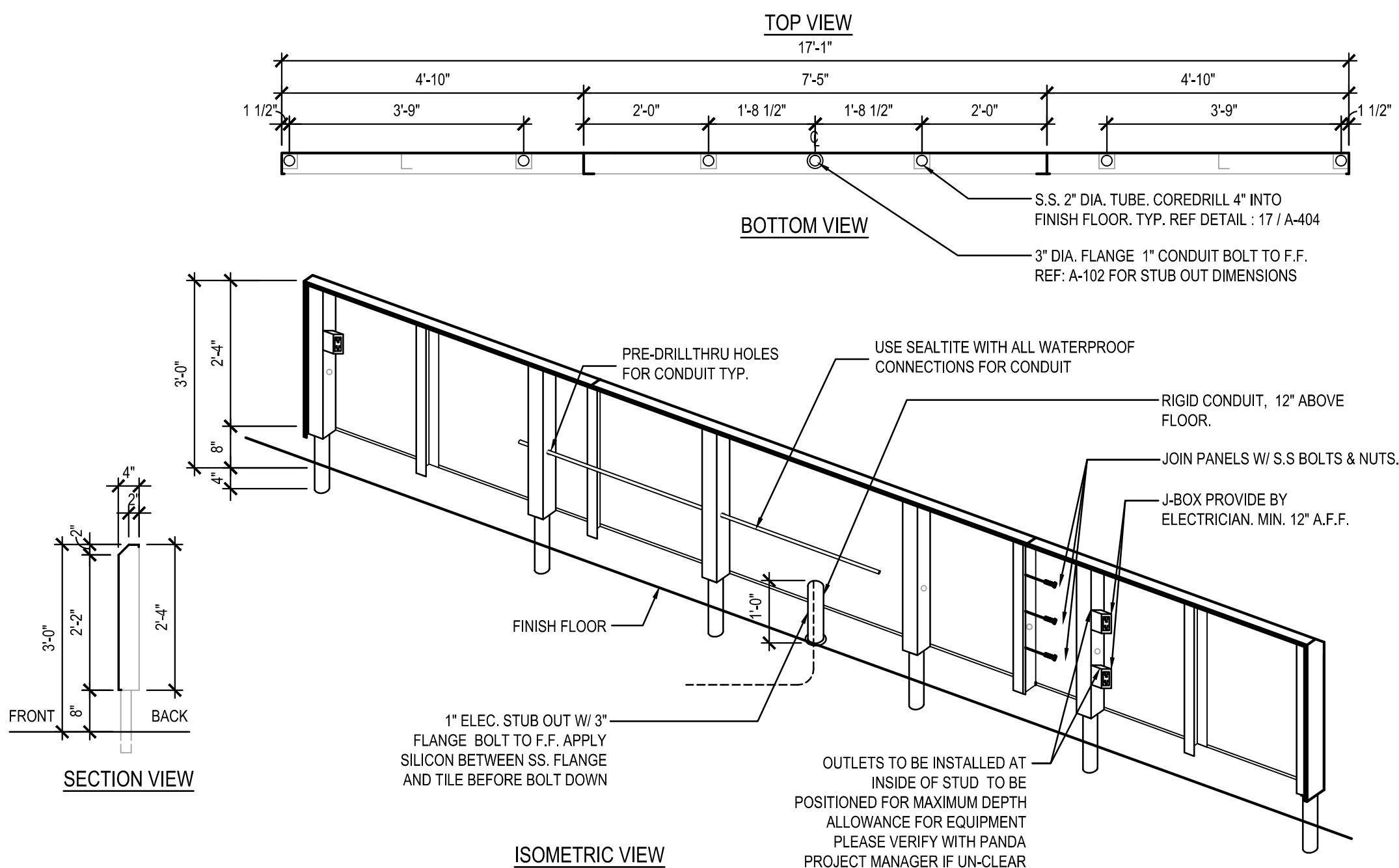
FURNITURE SCHEDULE

			L x W x H / (SEAT HEIGHT)	
T1e	LOW 2 TOP TABLE	PLASTIC LAMINATE	RICHFIELD	23 1/2" x 21" x 30"
T1h	LOW 4 TOP (ADA) TABLE	PLASTIC LAMINATE	RICHFIELD	23 1/2" x 41 1/4" x 30"
T2b	LOW 4 TOP TABLE-BOOTH	TETON BEIGE	RICHFIELD	48" x 23 1/2" x 30"
T2c	LOW 4 TOP (ADA) TABLE-BOOTH	TETON BEIGE	RICHFIELD	48" x 23 1/2" x 30"
T7j	COMMUNAL TABLE (6)	TEAK WOOD	RICHFIELD	28 X 86" x 34" x 2.5" TH
C1n	YARDBIRD DINING CHAIR	BLACK MATT W/ SANDING FINISH	RICHFIELD	
C2g	COUNTER CHAIR	SD9443B; W/ BACK	RICHFIELD	
C7i	SETTEE		RICHFIELD	48" L x 18" H
C7j	SETTEE		RICHFIELD	58 1/2" L x 18" H
C7k	SETTEE		RICHFIELD	99 1/2" L x 18" H
C7m1	SETTEE		RICHFIELD	CUSTOM
F6m1	LOW WALL		RICHFIELD	CUSTOM
F7j	DIVIDER LOW WALL		RICHFIELD	47"
F7n	END CAP		RICHFIELD	CUSTOM
F3o	TRASH RECEPTACLE BIN	LEFT BROOM	RICHFIELD	
F3p	TRASH RECEPTACLE BIN	RIGHT BROOM	RICHFIELD	
F2CL	BEVERAGE COUNTER	LEFT TETON BEIGE	RICHFIELD	SEE PLAN
F2CR	BEVERAGE COUNTER	RIGHT TETON BEIGE	RICHFIELD	SEE PLAN
F1d	SERVICE COUNTER	STRAIGHT-BF	RICHFIELD	SEE PLAN
D3b	45" COMMUNITY BOARD	BF-POWDER COAT "0P125 SILVER"	FAD	45" x 32"

OUTDOOR FURNITURE & ARCH. ELEMENTS

OC1	OUTDOOR CHAIR		RICHFIELD	22-7/8" x 22-1/2" x 35-3/8" ((17'-3/8'))
OT1	4 TOP OUTDOOR TABLE		RICHFIELD	48" x 24" x 30"
OT2	4 TOP OUTDOOR TABLE (ADA)		RICHFIELD	48" x 24" x 30"
OT3	2 TOP OUTDOOR TABLE		RICHFIELD	24" x 24" x 30"
OW1	OUTDOOR WASTE BIN		RICHFIELD	23" x 23-1/4" x 44-5/8"
OW2	OUTDOOR WASTE BIN	ALUMINUM	RICHFIELD	22-1/2" x 22-1/2" x 45"
F5a	UMBRELLA & BASE (6')	TOP: SUNBRELLA, CANVAS JOCKEY RED POLE: ALUM. MARINE SATIN ANODIZED BASE: 24" DIA. TUBE GALV. STEEL BASE	TUUCI	6' SQ. x 96" H
F5b	SINGLE POST PYRAMID UMBRELLA (12')	TOP: FABRIC TOP: PVC 50Z FERRARI PRECONTRACTANT POLE: B.L.K. 5.0 GA 7RD TUBING BASE: 8' SQ. PLATE ON CONC. FOOTING. SEE DETAIL	USA SHADE	12' SQ. x 10' 5-12/14" H

NOTE:
G.C. TO VERIFY FURNITURE SUPPLIER WITH
PANDA EXPRESS P.M. CORE DRILL DIMENSIONS
MAY VARY BETWEEN MANUFACTURERS



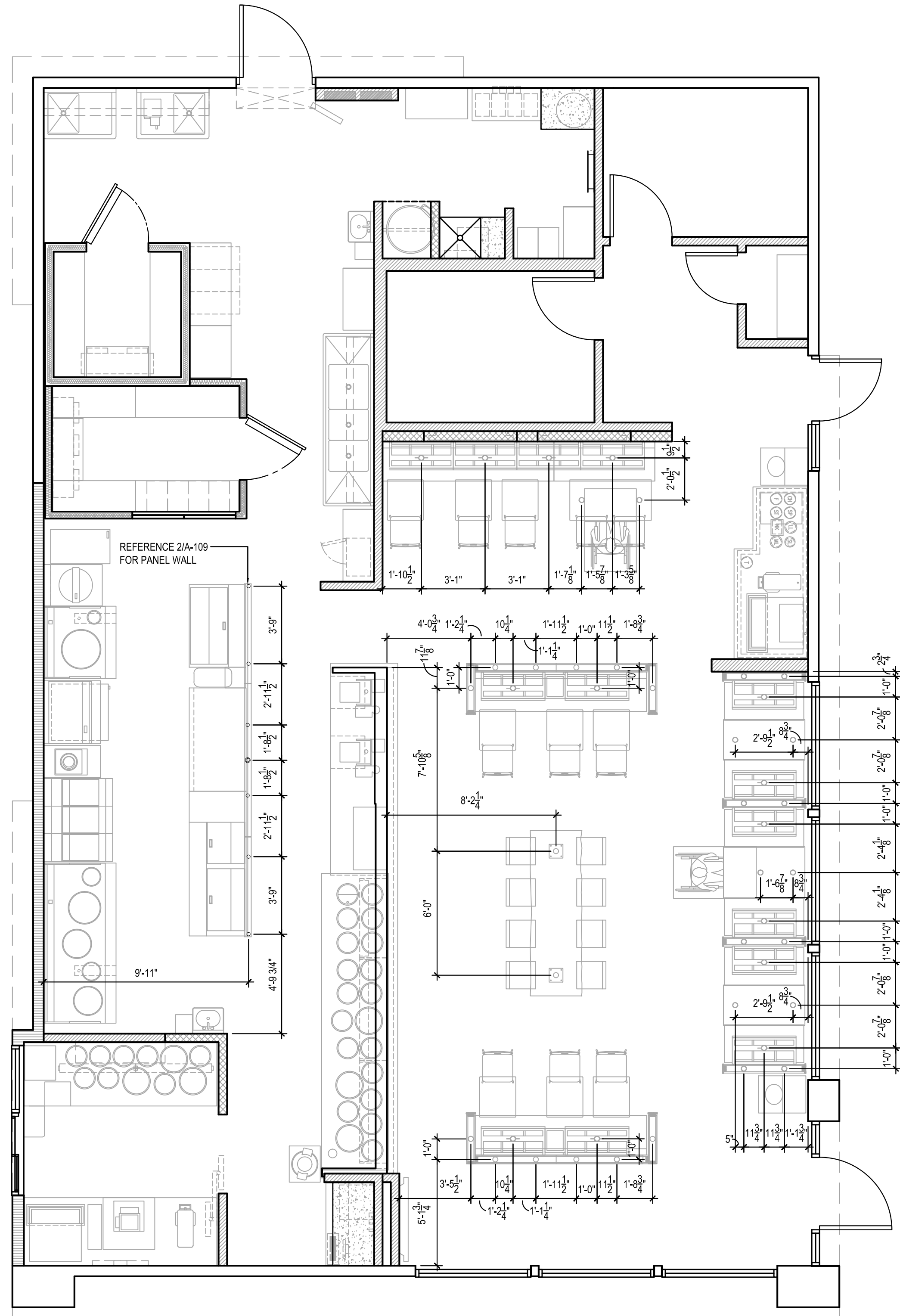
STAINLESS STEEL OUTLET PANEL

2

NOTE: ASSEMBLE WALL AND SET IN PLACE TO MARK AND CONFIRM BORE HOLES! REPORT ANY DISCREPANCIES TO PANDA P.M.

Scale= NTS

A-109



NOTE:
DIMENSIONS ARE FROM INTERIOR WALL
REFER TO VENDOR PACKET FOR
ADDITIONAL FURNITURE INFORMATION.
FINAL CORE DRILL LOCATIONS FOR
FURNITURE / EQUIPMENT SHALL BE
VERIFIED WITH PANDA EXPRESS
DESIGN MANAGER PRIOR TO DRILLING.

FURNITURE LOCATION PLAN

1

Scale= 1/4" = 1'-0"

A-109



PANDA RESTAURANT GROUP INC.

1683 Walnut Grove Ave.
Rosemead, California
91770

Telephone: 626.799.9898
Facsimile: 626.372.8288

All ideas, designs, arrangement and plans indicated or represented by this drawing are the property of Panda Express Inc. and were created for use on this specific project. None of these ideas, designs, arrangements or plans may be used by or disclosed to any person, firm, or corporation without the written permission of Panda Express Inc.

REVISIONS:

ISSUE DATE:

1st	ISSUE FOR BID & PERMIT	01-11-17

DRAWN BY: RR

PANDA PROJECT #: S8-17-D5197

ARCH PROJECT #: 1701

RANDY REYNOLDS
ARCHITECT

1702 MILDARE COURT, THOMPSONS STATION, TN 37179
PHONE (615) 591-0675 □ FAX (666) 594-1225

PANDA EXPRESS
HIGHWAY 90 AT SHADOW OAK DRIVE
4890 HIGHWAY 90
PACE (MILTON), FL 32571

2200 TRUE WARM & WELCOME

A-109

FURNITURE PLAN