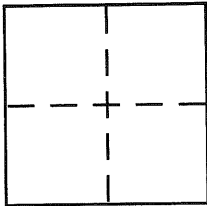


CORNER RECORDDocument Number CR 2096City of OAKLANDCounty of ALAMEDA, CaliforniaBrief Legal Description LOT 906 FORESTLAND EXTENSION (4 M 90)**CORNER TYPE**

Government Corner ☐ Control ☐
 Meander ☐ Property ☒
 Rancho ☐ Other ☐
 Date of Survey NOV. 29, 2003

COORDINATES (Optional)

N. _____
 E. _____
 Zone _____ NAD27 ☐ NAD83 ☐
 NAD83 Epoch _____
 Elev. _____
 Vert. Datum: NGVD29 ☐ NAVD88 ☐
 Meas. Units: Metric ☐ Imperial ☐

Corner - Left as found ☐ Found and tagged ☐ Established ☒ Reestablished ☐ Rebuilt ☐

Identification and type of corner found: Evidence used to identify or procedure used to establish or reestablish the corner:

FOUND CONCRETE MONUMENT PER (4 M 90)
FOUND 5/8" REBAR WITH PLASTIC CAP PER (CR 1999)
FOUND 2" HUB WITH BRASS TAG, LS 4961, PER (CR 1999)
BK 17 CR Pg 061

A description of the physical condition of the monument as found and as set or reset:

SET 5/8" REBAR WITH PLASTIC CAP, LS 4961
SET P.K NAIL WITH ALUMINUM TAG, LS 4961

SURVEYOR'S STATEMENT

This Corner Record was prepared by me or under my direction in conformance with the Land Surveyor's Act on DEC. 08 2003.

Signed Robert J. Brunel P.L.S or R.C.E. No. 4961

COUNTY SURVEYOR'S STATEMENT

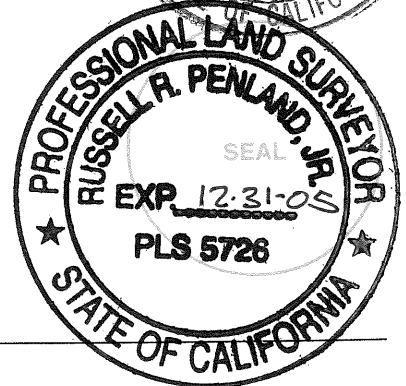
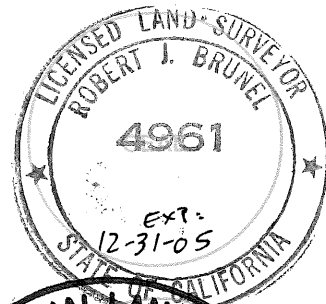
This Corner Record was received 1-16-04

and examined and filed 3-2-04

Signed Russell R. Penland P.L.S or R.C.E. No. 5726

Title COUNTY SURVEYOR

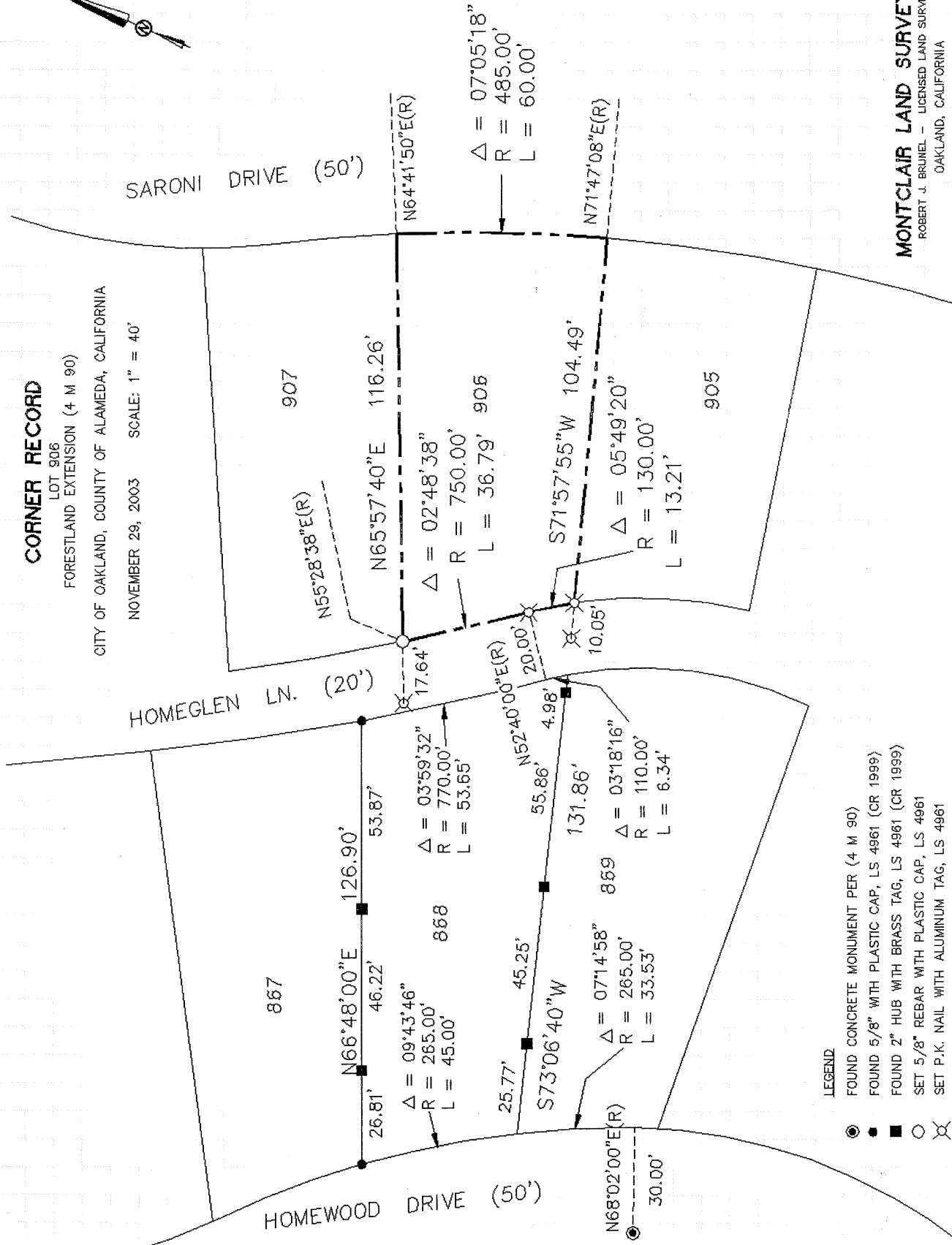
County Surveyor's Comment _____



X

CORNER RECORD

LOT 906
FORESTLAND EXTENSION (4 M 90)
CITY OF OAKLAND, COUNTY OF ALAMEDA, CALIFORNIA
NOVEMBER 28, 2003 SCALE: 1" = 40'



LEGEND

- FOUND CONCRETE MONUMENT PER (4 M 90)
- FOUND 5/8" WITH PLASTIC CAP, LS 4961 (CR 1999)
- FOUND 2" HUB WITH BRASS TAG, LS 4961 (CR 1999)
- SET 5/8" REBAR WITH PLASTIC CAP, LS 4961
- ⊗ SET P.K. NAIL WITH ALUMINUM TAG, LS 4961

MONTCLAIR LAND SURVEYING
ROBERT J. BRUNEL - LICENSED LAND SURVEYOR
OAKLAND, CALIFORNIA