



PIZZA HUT WINGSTREET PREP WALL SYSTEM Model #PHWPW30

PIZZA HUT WINGSTREET PREP WALL SYSTEM

Components:

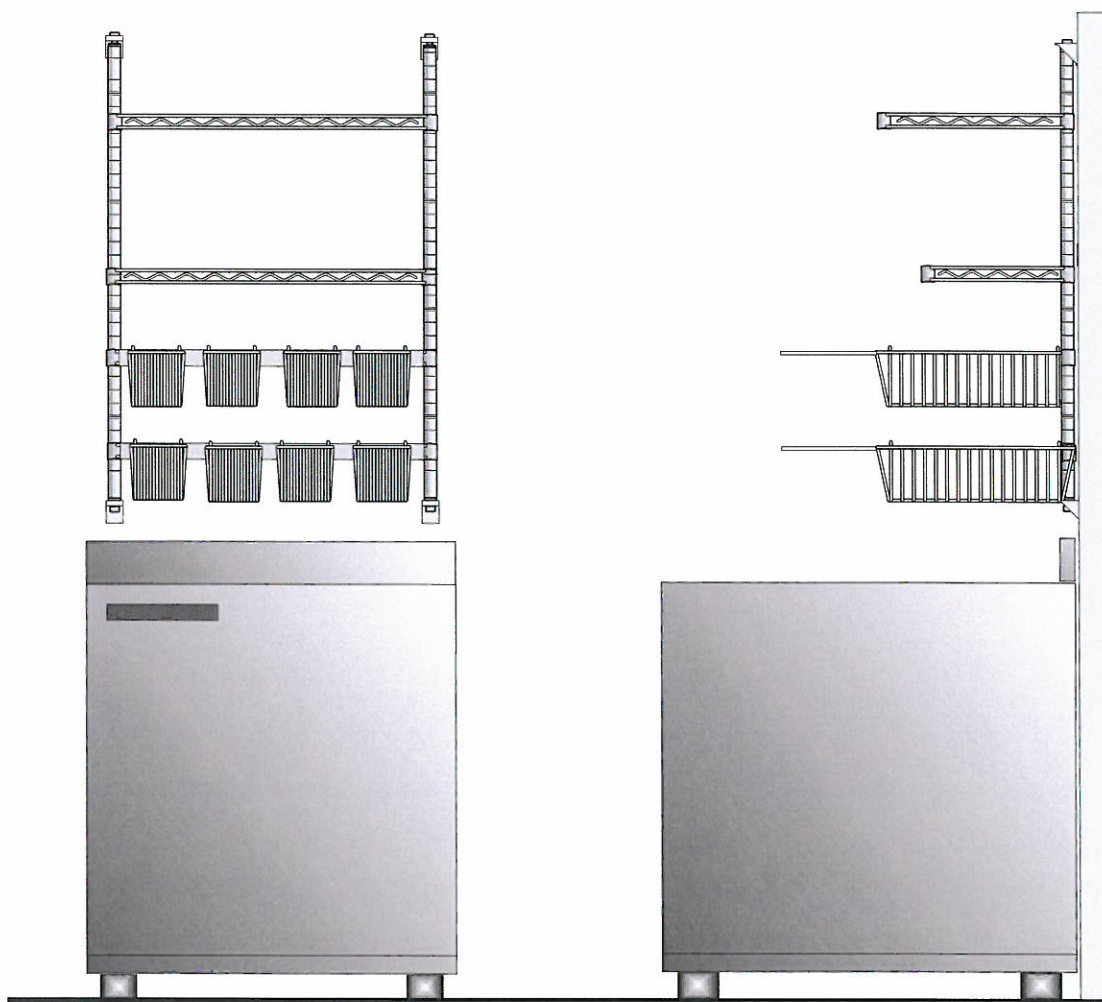
- Wall System allows for easy access to stored items
- Wall mounted allows for easy cleaning of the floor and access to adjacent equipment
- Upper Shelves for prep items and fryer filters
- Fryer Basket supports for Fryer Baskets

Sanitary: All components are finished in Metroseal III epoxy finish containing Microban.

Microban deters the growth of bacteria and mold.

NSF:

All components are manufactured per the NSF specifications and are NSF listed.



InterMetro Industries Corporation
North Washington Street
Wilkes-Barre, PA 18705
www.metro.com

INSTR-PHWPW30
091712

PIZZA HUT WINGSTREET PREP WALL SYSTEM, MODEL #PHWPW30

METRO

A S S E M B L Y M A N U A L

**This is suggested
as a 2 person installation.**

TOOLS REQUIRED:

Adjustable Wrench
Rubber Mallet
Pencil
Level
Measuring Tape
Drill
1/2" Drill Bit for Anchors
Phillips Head Screwdriver
(8) Toggle Anchors (3/16"-24)

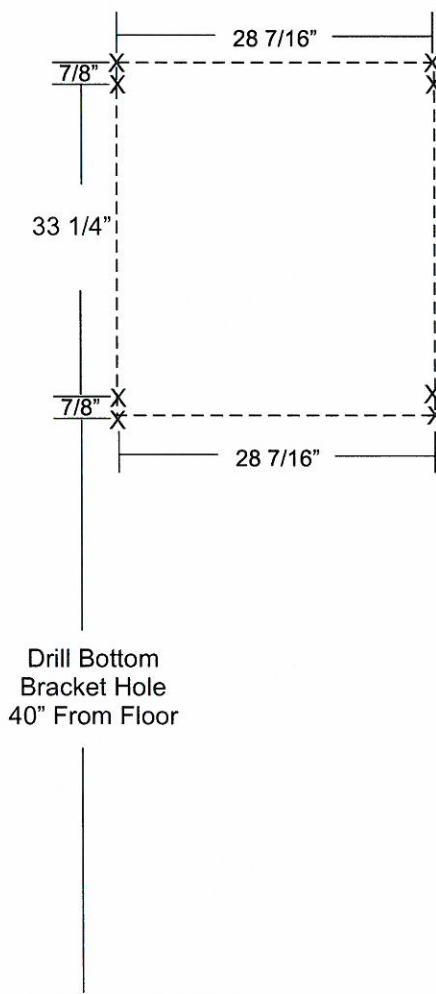
PARTS:

(2) 33PDFK3, 33" Posts with
Wall Brackets
(2) 30BHK3, Fry Basket
Holders
(1) 1430NK3, 14"x30" Bottom
Wire Shelf
(1) 1830NK3, 18"x30" Top
Wire Shelf

1

Mark wall and drill holes.

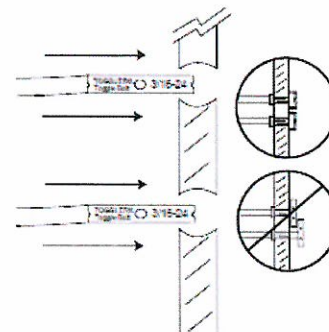
- Mark wall with an "X" at each point indicated.
- Measurements are from center to center of each "X" mark
- Drill all marked locations using a 1/2" drill bit.



2

Install anchors.

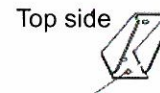
- Using 3/16-24 Toggle Bolt install into each hole.
- Note; Suggested anchors are the 3/16-24 Toggle Bolts with plastic legs.
- Once through, make sure that the metal part of each is sideways and does not interfere with the other anchor
- Push the plastic tab all the way forward until flush with the wall
- Break off plastic legs



3

Install Wall Brackets.

- Each Post requires 2 Wall Brackets (top and bottom)
- NOTE** - Center Brackets will also be included but they are not used in this application. They can be discarded.
- The Wall Brackets use the two top and two bottom markings.
- Install all Wall Brackets so the flat side is up



INSTR-PHWPW30
091712

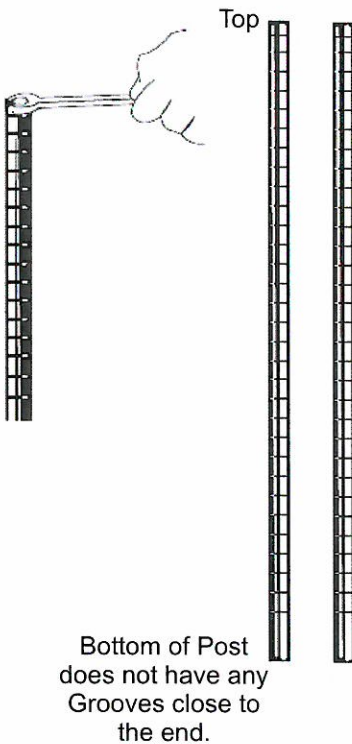
PIZZA HUT WINGSTREET PREP WALL SYSTEM, MODEL #PHWPW30

METRO

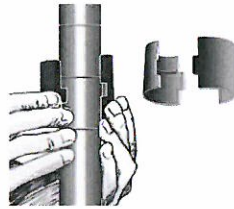
A S S E M B L Y M A N U A L

4 Unit Assembly.

- Remove the bolts from the ends of each Post.
- NOTE; The TOP of each post is indicated by the groove closest to the end (about 1/2")
- Assemble the unit on the ground as indicated

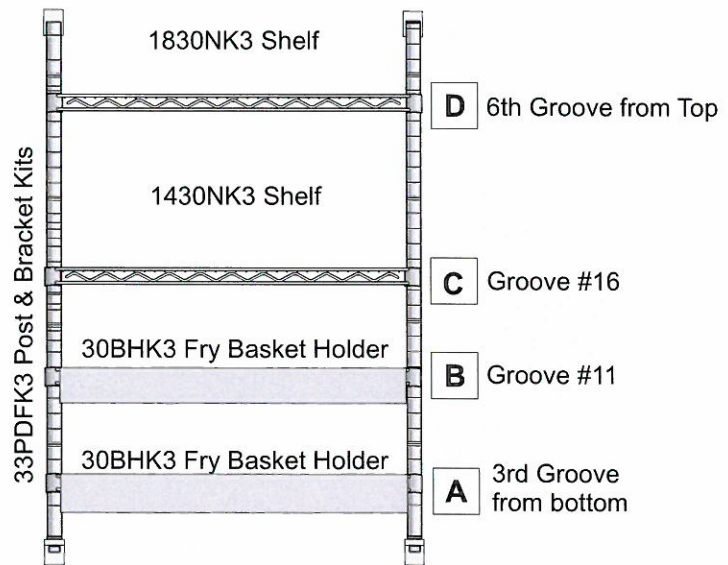


5 Assemble the unit PRIOR to putting it on the wall.



NOTE - Each component comes with a bag of Split Sleeves.

- Split Sleeves are made up of 2 halves.
- The bead on the inside is located towards the TOP of the Split Sleeve
- The bead clicks into the groove on the post



6 Place the Unit on the Wall Brackets.

- Place assembled unit onto Wall Brackets and screw in the bolts on TOP Wall Brackets slightly to stabilize the unit.
- Attach the bottom of the unit to the bottom Wall Bracket with the bolts.

NOTE - You will receive (2) center brackets that will not be used in this application. They can be discarded.



INSTR-PHWPW30
091712

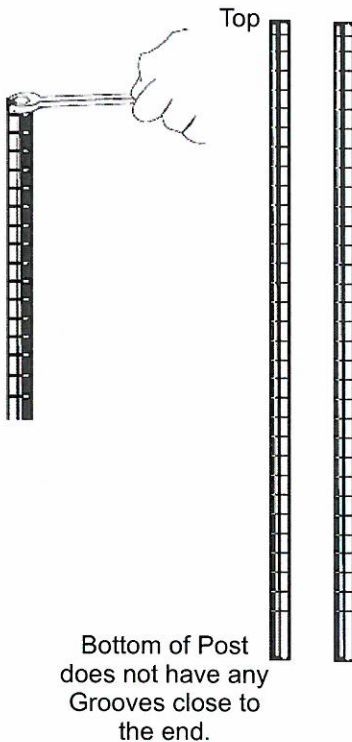
PIZZA HUT WINGSTREET PREP WALL SYSTEM, MODEL #PHWPW30

METRO

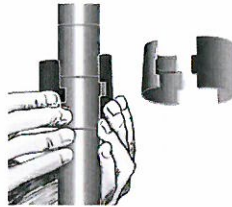
A S S E M B L Y M A N U A L

4 Unit Assembly.

- Remove the bolts from the ends of each Post.
- NOTE; The TOP of each post is indicated by the groove closest to the end (about 1/2")
- Assemble the unit on the ground as indicated

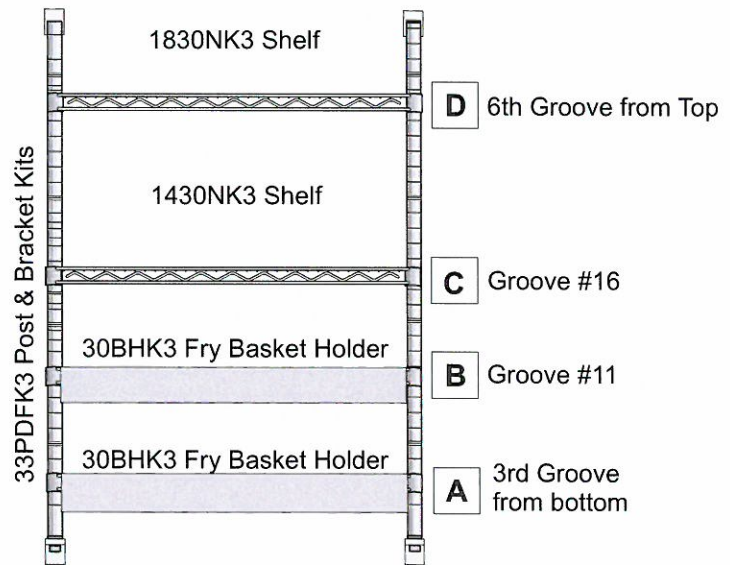


5 Assemble the unit PRIOR to putting it on the wall.



NOTE - Each component comes with a bag of Split Sleeves.

- Split Sleeves are made up of 2 halves.
- The bead on the inside is located towards the TOP of the Split Sleeve
- The bead clicks into the groove on the post



6 Place the Unit on the Wall Brackets.

- Place assembled unit onto Wall Brackets and screw in the bolts on TOP Wall Brackets slightly to stabilize the unit.
- Attach the bottom of the unit to the bottom Wall Bracket with the bolts.

NOTE - You will receive (2) center brackets that will not be used in this application. They can be discarded.



INSTR-PHWPW30
091712