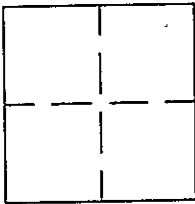


# CORNER RECORD

98-077 7 Cr 055

APN No. 028 - 0942 - 000 - 00 (Optional)Document Number CR 1031City of OAKLANDCounty of ALAMEDA, CaliforniaBrief Legal Description Found monuments per Corner Record 778 between Lots 13 & 14, Block K, Laurel Grove Park, 16 M 12.

## CORNER TYPE

Government Corner ☐ Control ☐  
Meander ☐ Property ☐  
Rancho ☐ Other ☐  
Date of Survey \_\_\_\_\_

## COORDINATES (Optional)

N. \_\_\_\_\_  
E. \_\_\_\_\_  
Zone \_\_\_\_\_ Datum \_\_\_\_\_  
Elev. \_\_\_\_\_

Corner - Left as found ☐ Found and tagged ☐ Established ☐ Reestablished ☐ Rebuilt ☐

In compliance with Section 8771 of the Professional Land Surveyors' Act, this corner record is being filed to ESTABLISH \_\_\_\_\_ / REESTABLISH \_\_\_\_\_ the position of an existing monument PRIOR \_\_\_\_\_ / SUBSEQUENT \_\_\_\_\_ to street or highway reconstruction. (Use this portion only when applicable.)

Identification and type of corner found: Evidence used to identify or procedure used to establish or reestablish the corner: The County Surveyor prepared this Corner Record only to identify the source of the Non Record survey monuments found and noted on Corner Record 778, and is not the result of a field survey.

A description of the physical condition of the monument as found and as set or reset: \_\_\_\_\_ The sketch on Page 2 is abridged from Corner Record 778, and shown hereon only as a general reference guide. Use Corner Record 778 for the actual surveyed measurements and relationships.

## SURVEYOR'S STATEMENT

This Corner Record was prepared by me or under my direction in conformance with the Land Surveyors' Act on JUNE 11 19 98.

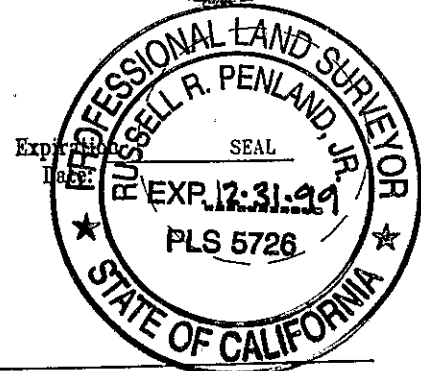
Signed J. Joanne Fetzer L.S. or R.C.E. Number LS 7236



## COUNTY SURVEYOR'S STATEMENT

This Corner Record was received 6-11 19 98 and examined

and filed 6-18 19 98  
Signed Russell R. Penland, Jr. Title Deputy County Surveyor



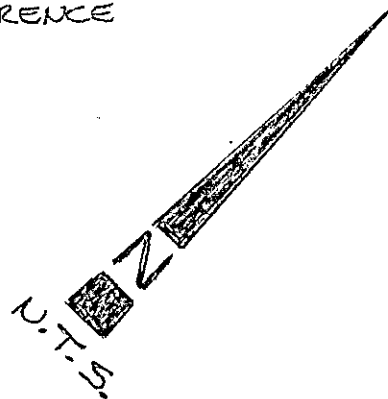
## County Surveyor's Comment

A letter from Mr. C.D. Bailey (R.L.S. 6745) dated 3/3/1997 states that the survey monuments in question were set by his father (R.L.S. 3289) in 1979, and complied with the then current surveying practice, and that no map of record was produced.

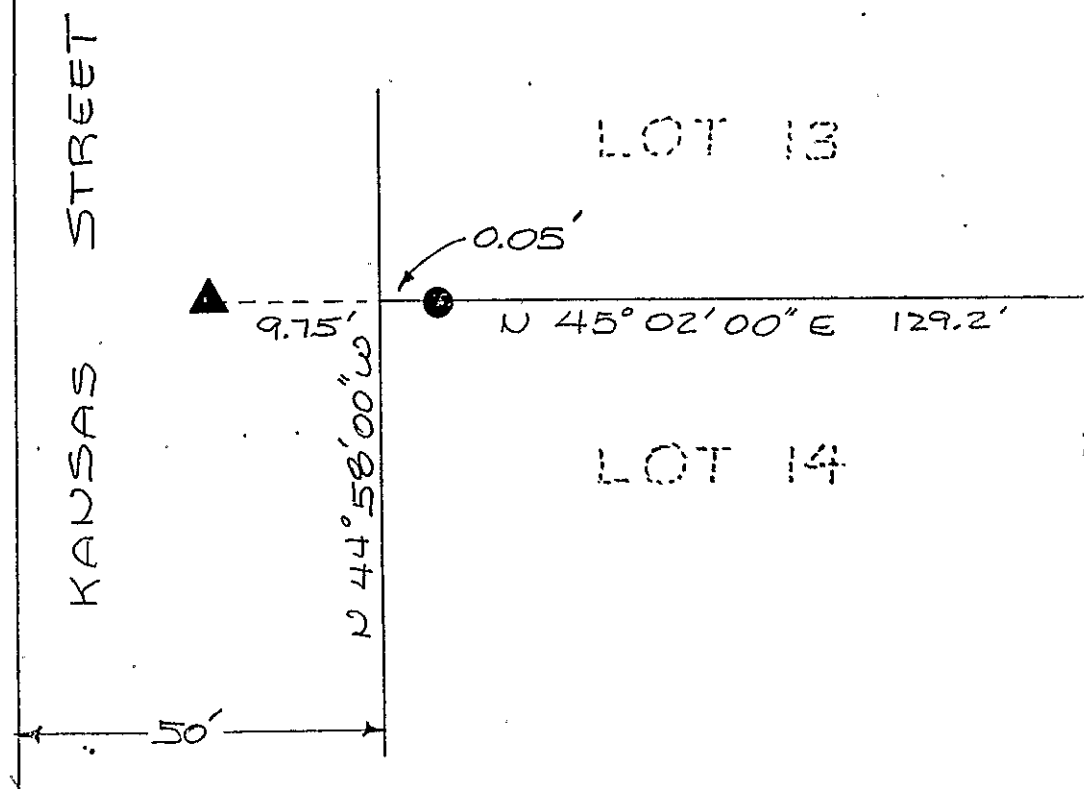
The County Surveyor sees no need for any further action.

LEGEND

- ▲ FOUND NAIL & TAG  
LS 3289. NO RECORD REFERENCE  
(SEE NOTE PG. 1)
- FOUND  $\frac{3}{8}$ " DIAM. METAL  
PIN IN CHISELED CROSS



MAP OF LAUREL GROVE PARK  
16 M 12  
BLOCK K



NOTE: THE ABOVE MONUMENTS WERE FOUND  
PER CORNER RECORD 778, 6 CR 015.  
BEARINGS & DISTANCES ARE PER CR 778.

1031